



siteco

The future of education.
Lighting solutions
for the next generation.

Quantum leap lighting solution.

Lighting solutions from a single source make all the difference. Because understanding lighting as a whole is the foundation for developing truly effective lighting solutions.

That's why we focus on efficiency, modularity, and intelligence. For both our products and services. With unique expertise, technological finesse, and an unmatched depth of value creation.
Made in Traunreut, Germany.

SITECO stands for a quantum leap in lighting solutions: lighting, control, project and operation.

Quantum leap education.

Unrivaled light quality.

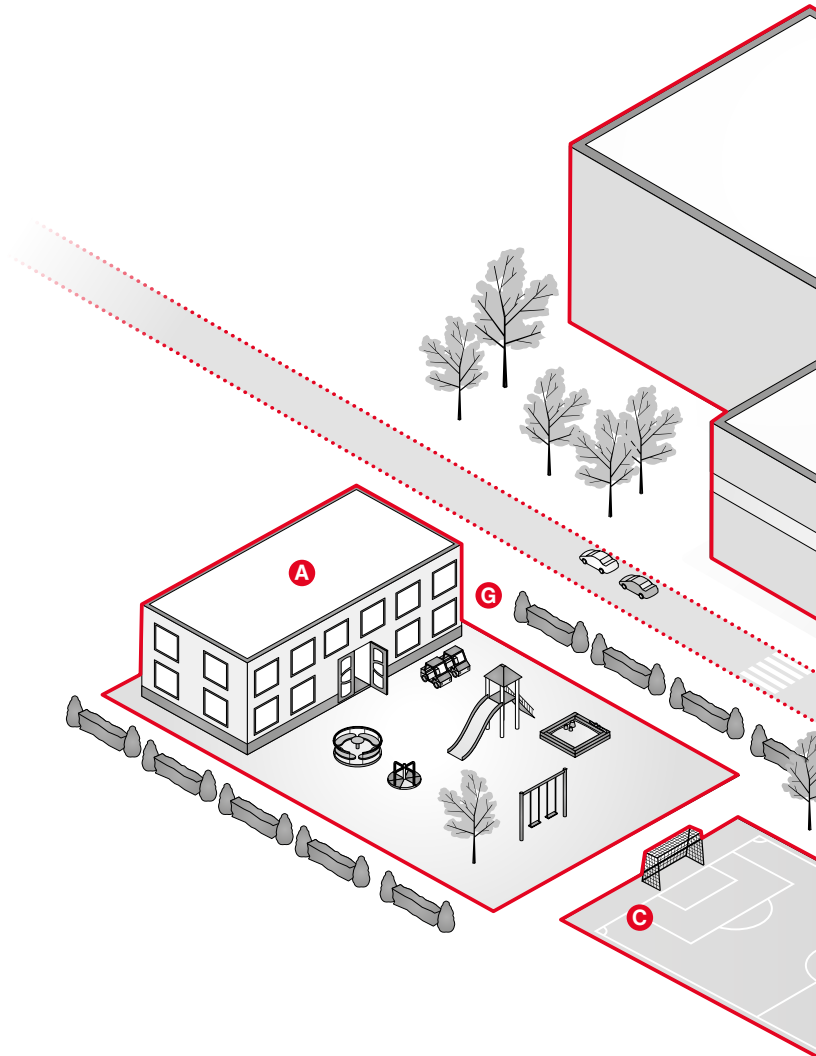
Whether classroom, lecture hall, sports hall, or outdoor area – we ensure the best learning conditions on the entire campus.

Maximum flexibility.

Fast, reliable, and tailored to your needs – we live Made in Traunreut, Germany.

Fully sustainable.

Minimal energy costs, replaceable and upgradeable – the most efficient light, modularly designed.



More about our lighting solutions for the education of tomorrow.

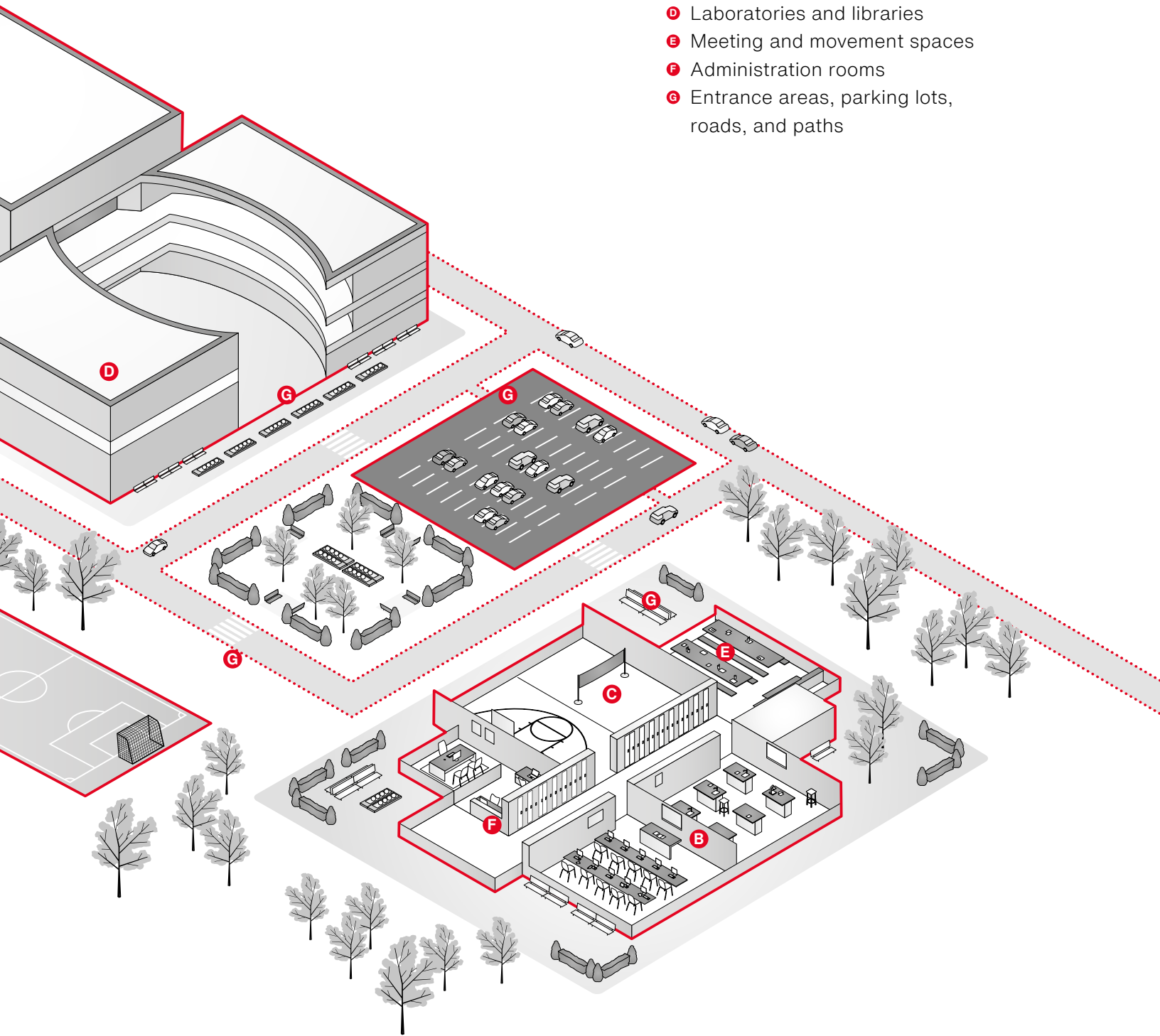


Main areas:

- A** Daycare rooms
- B** Classrooms
- C** Sports halls and courts
- D** Lecture halls

Secondary areas:

- D** Laboratories and libraries
- E** Meeting and movement spaces
- F** Administration rooms
- G** Entrance areas, parking lots, roads, and paths



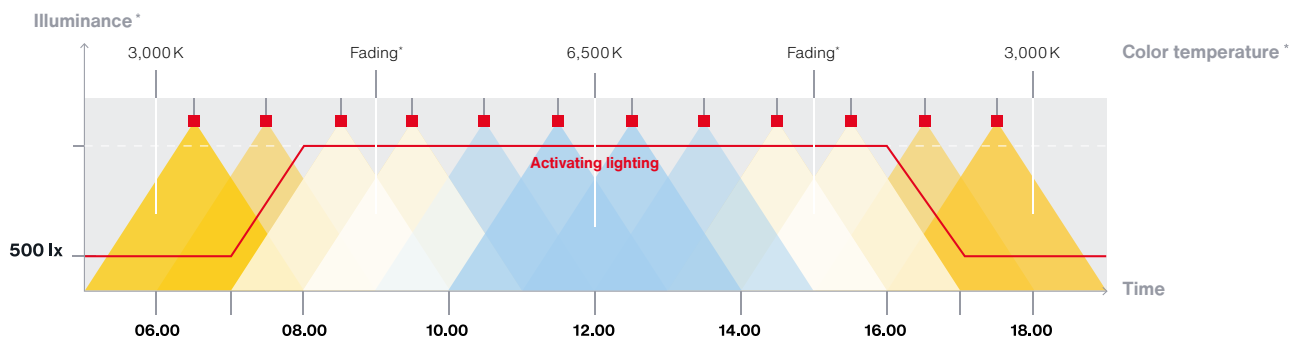
Healthy light that strengthens learning.

Light influences well-being, concentration, and success. We take it a step further: Healthy light.

Our revolutionary biological light brings the day into the room. Either with fullspectrum technology or as dynamic Human Centric Lighting (HCL^{live}) that adapts to the course of the day.

Light that has been proven to promote health.
Made for people.

A quantum leap for health.



* Project-specific design in accordance with DIN SPEC 67600, 5031-100, and EN 12464-1





We live Made in Traunreut.

Unique depth of value creation, maximum independence, and lighting expertise built on over than 160 years of SITECO. In Traunreut, Bavaria, lighting ideas are born, developed, and produced.

Customized lighting solutions.

We are your partner for individual lighting solutions – flexible, fast, and always solution-oriented.

Whether suspended ceilings, strip grids, or system ceilings. Our refurbishment kits are adaptable, minimize effort, and allow for easy installation during ongoing operations.

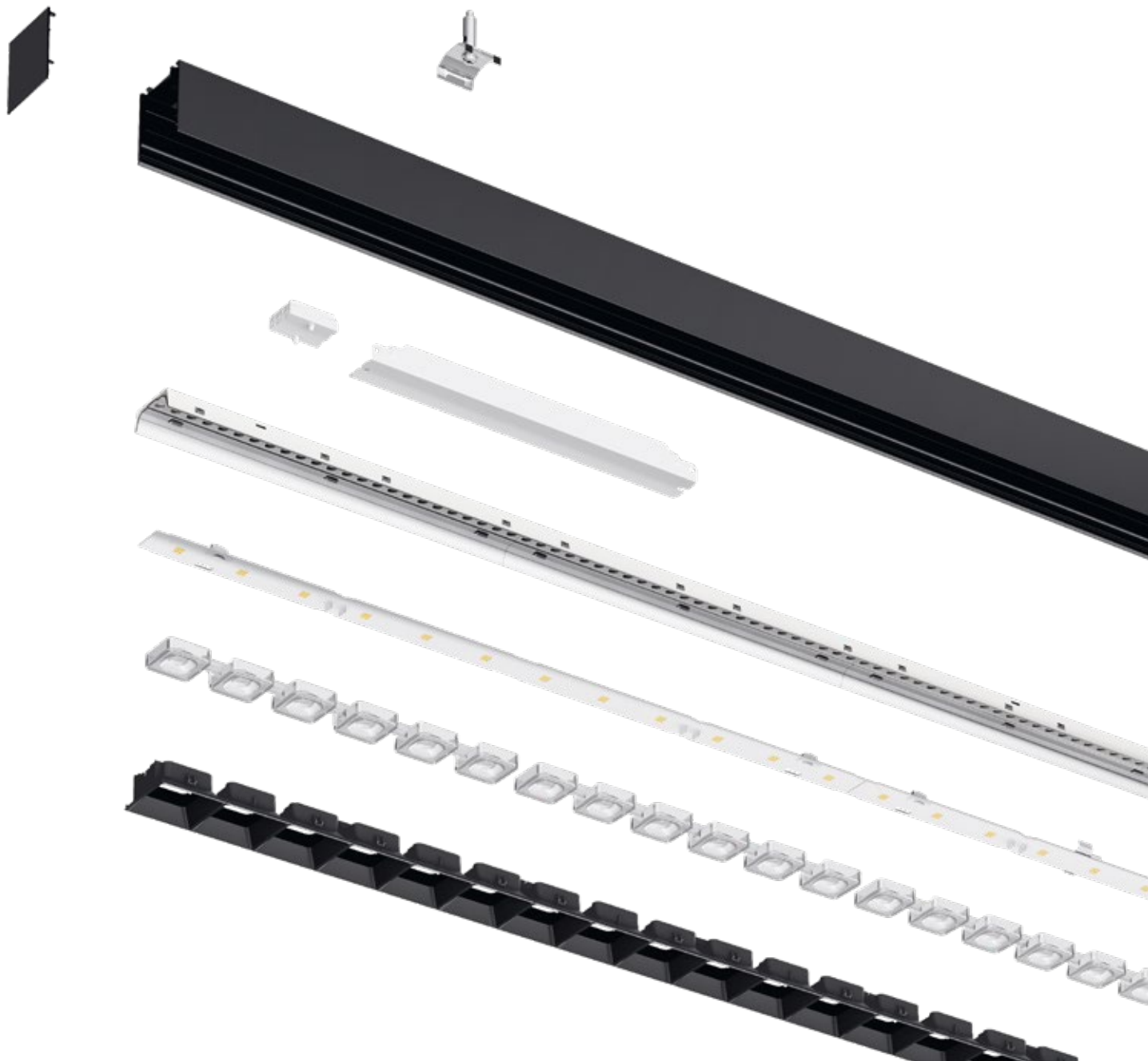
A quantum leap in flexibility.

Fully sustainable.

We embrace sustainability and are committed to efficiency and modularity.

Maximum CO₂ and energy savings meet infinite customization options and maximum longevity. Components can be easily replaced even years down the line – ensuring simple maintenance, repairs, and upgrades.

A quantum leap for your sustainability.

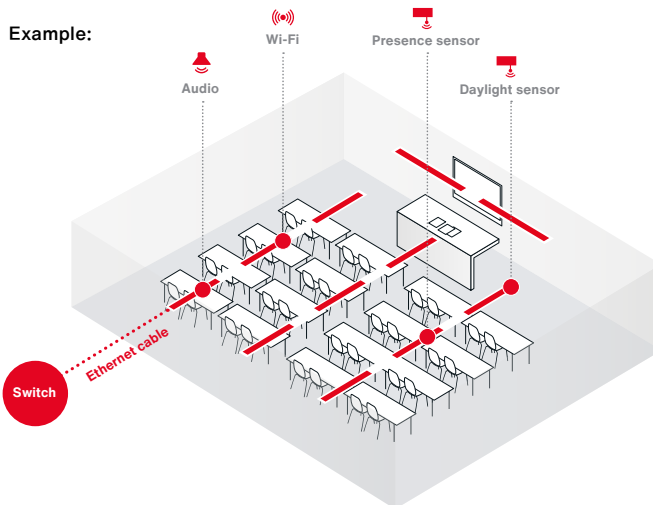


Intelligent buildings.

Light is part of a networked infrastructure and forms the basis for your intelligent building.

Whether stand-alone or integrated into the existing building control system – with SITECO Connect, you maximize the potential of your lighting, save energy, and eliminate redundant building infrastructure.

A quantum leap for your building.



Optimized structure:

- ⊕ Low installation effort
- ⊕ Transmission lengths > 300 m
- ⊕ High flexibility
- ⊕ Low material costs
- ⊕ Network components can be scaled down
- ⊕ Simple retrofitting of devices
- ⊕ Tidy and uncluttered ceiling





Wi-Fi

Comprehensive Wi-Fi coverage throughout the building.

HCL

Human Centric Lighting

Biological light supports healthy learning.

Sensors & control

Sensors save energy. Preset scenes adjust the light at the push of a button.

Audio

Announcements, alarms, and break bell integrated.

Up to 40 % subsidy.

BEG and BMWK subsidies support the retrofitting of municipal lighting. We help with the assessment and application process.

Save up to 40 % of the investment costs while reducing operating costs by 70 %. If not now, then when?

A quantum leap in financing your project.



Federal funding for efficient buildings (BEG) or BMWK funding program

Minimum technical requirements	BEG	BMWK
✓ System luminous efficacy	Continuous-row luminaires 140lm/W, otherwise 120lm/W	100lm/W
✓ Luminous flux maintenance	L80 / 50,000 h	L80 / 50,000 h
✓ Minimum requirement for lighting control	none	GEG reference technology
Minimum CO₂ savings	none	50 %
Subsidy	15 %	25 % – 40 %
Minimum investment	300 €	10,000 € minimum grant
Period of validity	until 31.12.2030	until 31.12.2027

General conditions: Retrofit of lighting systems in municipal existing buildings (also for companies in the private sector)

Eligible expenditure:

- Light replacement incl. installation / dismantling
- Control technology, e.g., SITECO Connect
- Ancillary work and lighting design

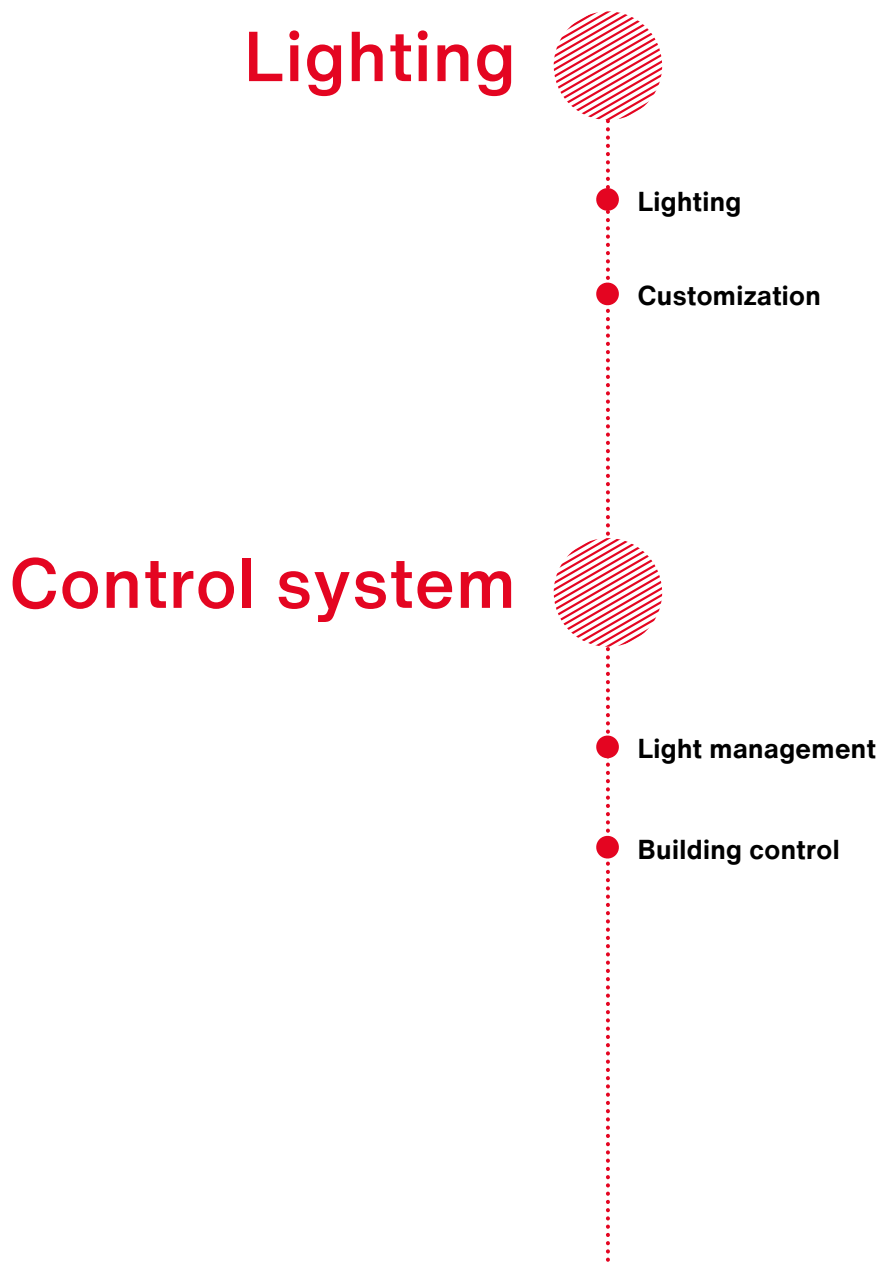
For details, visit:

[www.siteco.com/
solutions/
funding-programs](http://www.siteco.com/solutions/funding-programs)



Maximum competence.

We understand your project and support you from start to finish with our unique lighting expertise and our extensive partner network.





Project

Light audit ●

Subsidies ●

Coordination & implementation ●



Operation

Digital cadastre ●

Energy monitoring ●

Aftersales ●

Outstanding lighting technology is the foundation. Lighting control creates optimum conditions for learning and enables sustainable operation. Our aim is to guide your project to success – you decide how we can support you.

A quantum leap for holistic lighting solutions.



Lighting for
interior spaces.



Light that **supports education.**

Light fosters learning – it creates atmosphere, enhances concentration, and encourages sustainability.

Bright, glare-free lighting supports learning-performance, while warm light promotes relaxation. With flexible control, the light adapts to the time of day and usage, optimizes the use of light, and reduces energy consumption.

SITECO lighting solutions offer ideal conditions for your educational facility and minimize energy costs.

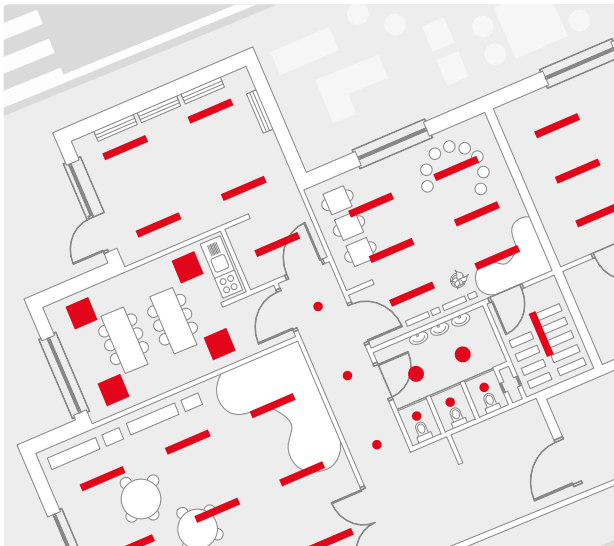
A quantum leap for your learning spaces.

Areas of application:

- Daycare centers
- Classrooms
- Lecture halls, laboratories, and libraries
- Meeting and movement spaces
- Administration rooms

Planning your daycare center.

- **Warm white light** (approx. 3,000 K) promotes well-being.
- **High color rendering** makes painting, crafting, and puzzling easier.
- **Diffuse covers** minimize glare when looking upwards.
- **Adjustable lighting:** Flexible light levels for sleeping, playing, and crafting.
- **Save energy:** Pre-set light scenes and daylight-dependent control.



Solutions:

- **Round 21**
- **Silica 31 Square**
- **Silhouette 21**
- **Lunis 21**
- ...

Standards and regulatory requirements:

	Illuminance		Uniformity	Glare limitation
	E_m lx		U_0	UGR
	required ¹	modified ²		
Kindergarten	300	500	0.4	22
Playroom	300	500	0.4	22
Craft room	300	500	0.6	19

1) Corresponds to the required minimum value according to the table in EN 12464-1.
 2) The higher, modified value according to the table in EN 12464-1 must be applied if the visual conditions deviate from the standard conditions, e.g., for particularly demanding visual tasks, unfavorable contrast ratios, or safety-critical work areas.



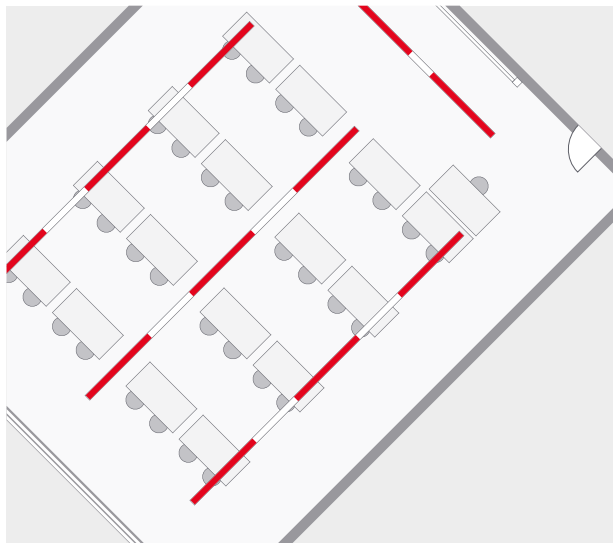






Planning your classrooms.

- **Direct and indirect light** ensure uniform illumination and biological light (HCL ^{live}).
- **Uniformly good lighting conditions** allow flexible use of the space.
- **Adjustable light colors** (2,700 – 6,500 K) adapt to the course of daylight.
- **Board lighting:** Uniform, separately switchable, and dimmable.



Solutions:

- Silica 21
- Licross 11 / 21
- Apollon 31 Rectangular
- ...

Standards and regulatory requirements:

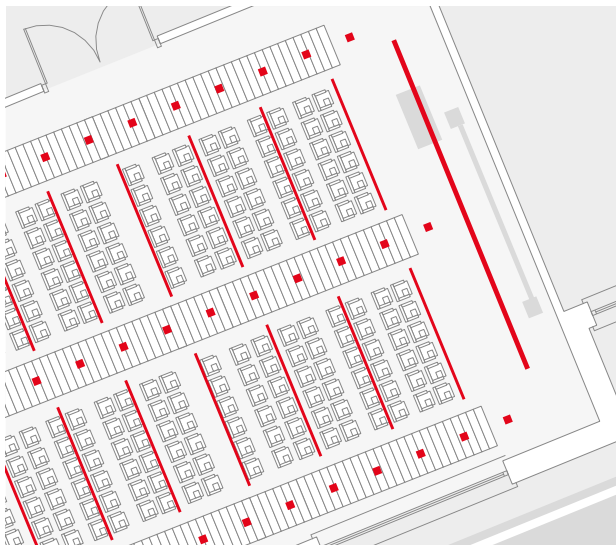
	Illuminance		Uniformity	Glare limitation
	E_m lx		U_0	UGR
	required ¹	modified ²		
Classroom	500	1,000	0.6	19
Vertical board	500	750	0.7	19

1) Corresponds to the required minimum value according to the table in EN 12464-1.

2) The higher, modified value according to the table in EN 12464-1 must be applied if the visual conditions deviate from the standard conditions, e.g., for particularly demanding visual tasks, unfavorable contrast ratios, or safety-critical work areas.

Planning your lecture halls, laboratories, and libraries.

- **Controllable lighting:** Central control directly at the speaker's desk.
- **Precise light distribution:** Clear illumination of stairs and walkways without spill light.
- **Wallwasher:** Uniform, bright light for the stage and presentation area.
- **Glare-free light for students:** Allows note-taking without scattered light on the screen.
- Plan **emergency exit luminaires** for safety.



Solutions:

- Silica 21 recessed luminaires
- Lunis 21
- Round 21
- ...

Standards and regulatory requirements:

	Illuminance		Uniformity	Glare limitation	
	E_m lx	required ¹	modified ²	U_0	UGR
Lecture hall	500	750	0.6	19	
Vertical board	500	750	0.6	19	

1) Corresponds to the required minimum value according to the table in EN 12464-1.

2) The higher, modified value according to the table in EN 12464-1 must be applied if the visual conditions deviate from the standard conditions, e.g., for particularly demanding visual tasks, unfavorable contrast ratios, or safety-critical work areas.





Selected products for your **learning spaces**.



Silica 21 Eldacon L



Silica 31 Square

Silica family

- **Flexible:** recessed, surface-mounted, pendant luminaires, various light distributions
- **Efficient:** 185 lm/W
- **Ergonomic:** glare-free ($UGR \leq 19$), Tunable White, indirect light
- **Future-proof:** DALI-2 control
- **Sustainable:** replaceable components, easy upgrades, 70,000 h service life



Licross 21 Performance



Licross 21 Recessed

Licross family

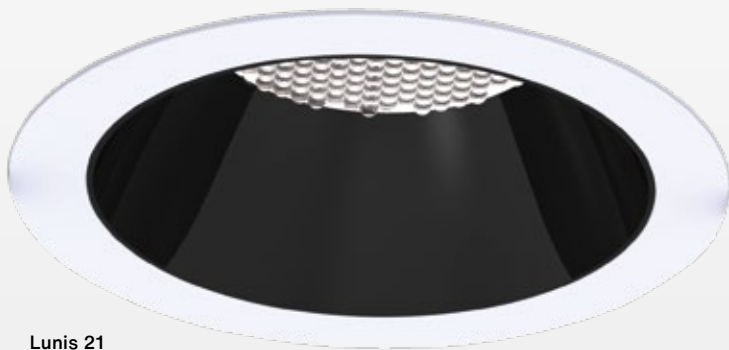
- **Flexible:** various inserts and light distributions, simple extension, Wi-Fi, audio, video
- **Efficient:** 209 lm/W
- **Ergonomic:** glare-free ($UGR \leq 19$), Tunable White
- **Future-proof:** DALI-2 control, 14 cores
- **Sustainable:** replaceable components, easy upgrades, 100,000 h service life

Round 21

- **Flexible:** wall and ceiling light, various sizes and colors, Multilumen
- **Efficient:** 146 lm/W
- **Ergonomic:** indirect light, Tunable White
- **Future-proof:** DALI-2 control
- **Sustainable:** 50,000 h service life



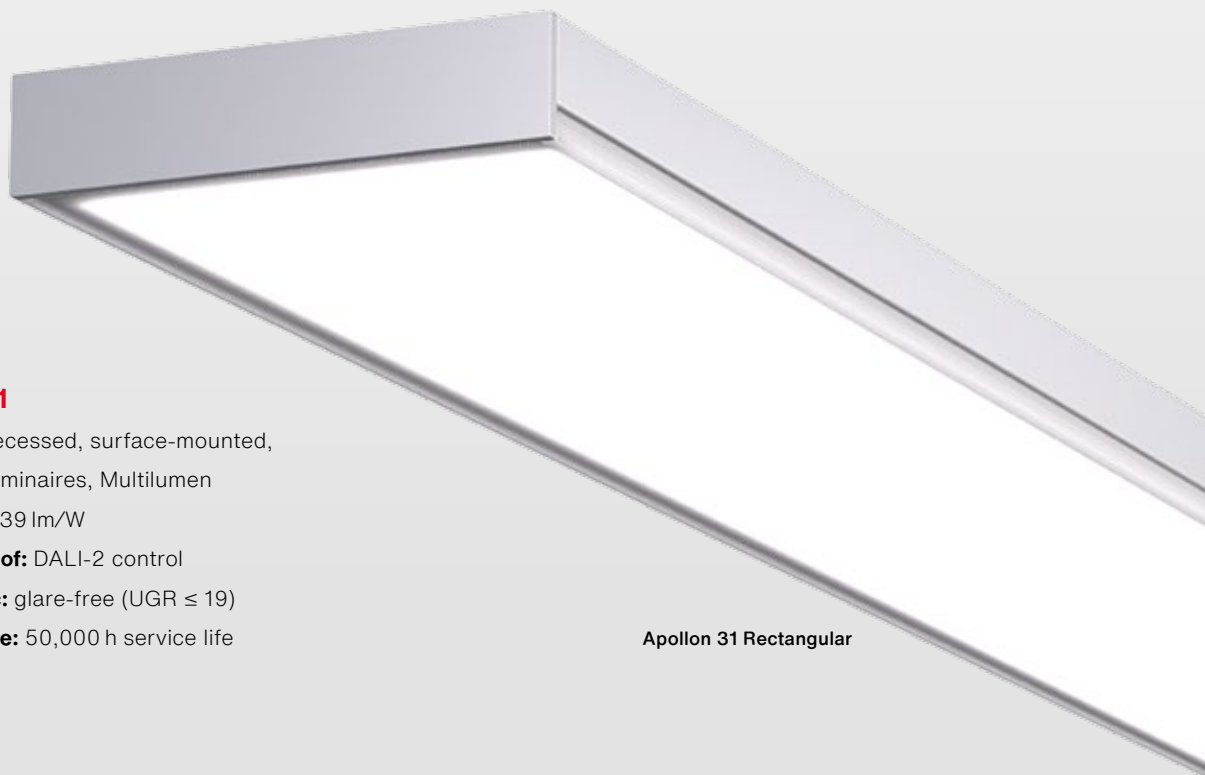
Round 21



Lunis 21

Lunis 21

- **Flexible:** replaces downlights (Ø 68 – 265 mm), 5 optics, Multilumen
- **Efficient:** 185 lm/W
- **Ergonomic:** glare-free (UGR ≤ 19), Tunable White
- **Future-proof:** DALI-2 control
- **Sustainable:** replaceable components, easy upgrades, 50,000 h service life



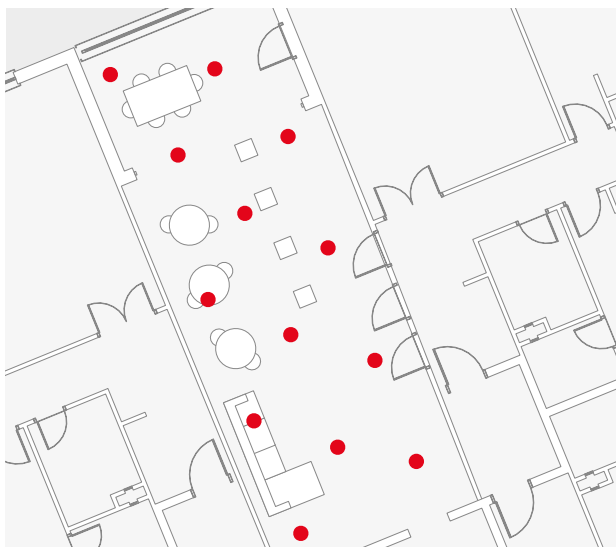
Apollon 31

- **Flexible:** recessed, surface-mounted, pendant luminaires, Multilumen
- **Efficient:** 139 lm/W
- **Future-proof:** DALI-2 control
- **Ergonomic:** glare-free (UGR ≤ 19)
- **Sustainable:** 50,000 h service life

Apollon 31 Rectangular

The planning of your meeting and movement spaces.

- **A loose arrangement of lights** creates an inviting atmosphere.
- **Warm white light** (approx. 3,000 K) promotes well-being.
- **Daylight sensors** reduce artificial light when there is sufficient daylight.
- **Spotlights and wallwashers** perfectly highlight pinboards or art.
- **Safety lighting** is mandatory for traffic areas.



Solutions:

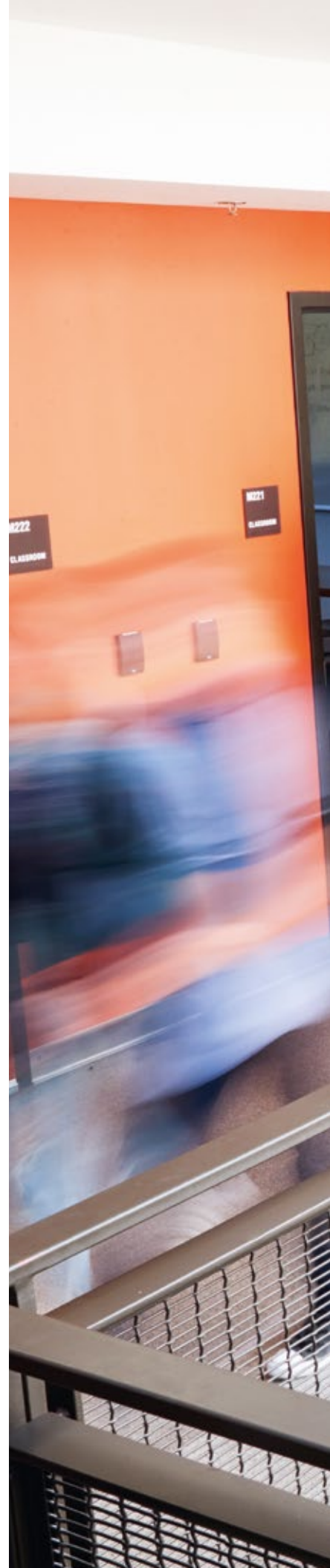
- **Licross Opal**
- **Silica 21 Opal**
- **Round 21**
- **Lunis 21**
- **Silhouette 21**
- ...

Standards and regulatory requirements:

	Illuminance		Uniformity	Glare limitation
	E_m lx		U_o	UGR
	required ¹	modified ²		
Break area	200	500	0.4	22
Staircase	150	200	0.4	25

1) Corresponds to the required minimum value according to the table in EN 12464-1.

2) The higher, modified value according to the table in EN 12464-1 must be applied if the visual conditions deviate from the standard conditions, e.g., for particularly demanding visual tasks, unfavorable contrast ratios, or safety-critical work areas.







2

Planning your administrative offices.

- **VDU workstations:** Use luminaires with good contrast rendering and optimum glare control.
- **Direct and indirect lighting** provide uniform light and support biological light (HCL^{live}).
- **Adjustable light colors** (2,700 – 6,500 K) support the circadian rhythm and increase well-being and performance.
- **Individually adaptable light** caters to different needs.
- **Lighting scenes** allow easy adjustment to different requirements.



Solutions:

- Silica 21
- Apollon 31 Rectangular
- Licross 11
- ...

Standards and regulatory requirements:

	Illuminance		Uniformity	Glare limitation	
	E_m lx	required ¹	modified ²	U_0	UGR
Office	500	1,000	0.6	19	

1) Corresponds to the required minimum value according to the table in EN 12464-1.

2) The higher, modified value according to the table in EN 12464-1 must be applied if the visual conditions deviate from the standard conditions, e.g., for particularly demanding visual tasks, unfavorable contrast ratios, or safety-critical work areas.

Selected products for your **meeting and administration rooms.**

Silica 21 Eldacon P

Silica family

- **Flexible:** recessed, surface-mounted, pendant luminaires, various light distributions
- **Efficient:** 185 lm/W
- **Ergonomic:** glare-free ($UGR \leq 19$), Tunable White, indirect light
- **Future-proof:** DALI-2 control
- **Sustainable:** replaceable components, easy upgrades, 70,000 h service life

Apollon 31

Apollon 31

- **Flexible:** recessed, surface-mounted, pendant luminaires, Multilumen
- **Efficient:** 139 lm/W
- **Future-proof:** DALI-2 control
- **Ergonomic:** glare-free ($UGR \leq 19$)
- **Sustainable:** 50,000 h service life

Silhouette 21

Silhouette 21

- **Flexible:** different sizes, Multilumen, various colors
- **Efficient:** 147 lm/W
- **Future-proof:** integrable HF sensor
- **Sustainable:** 100,000 h service life



Round 21

Round 21

- **Flexible:** wall and ceiling light, various sizes and colors, Multilumen
- **Efficient:** 147 lm/W
- **Ergonomic:** indirect light, Tunable White
- **Future-proof:** DALI-2 control
- **Sustainable:** 50,000 h service life



Lunis 21

Lunis 21

- **Flexible:** Replaces downlights (Ø 68 – 265 mm), 5 optics, Multilumen
- **Efficient:** 185 lm/W
- **Ergonomic:** glare-free (UGR ≤ 19), Tunable White
- **Future-proof:** DALI-2 control
- **Sustainable:** replaceable components, easy upgrades, 50,000 h service life

Licross family

- **Flexible:** various inserts and light distributions, easy expansion, Wi-Fi, audio, video
- **Efficient:** 209 lm/W
- **Ergonomic:** glare-free (UGR ≤ 19), Tunable White
- **Future-proof:** DALI-2 control, 14 cores
- **Sustainable:** replaceable components, easy upgrades, 100,000 h service life

Licross 21 Silica

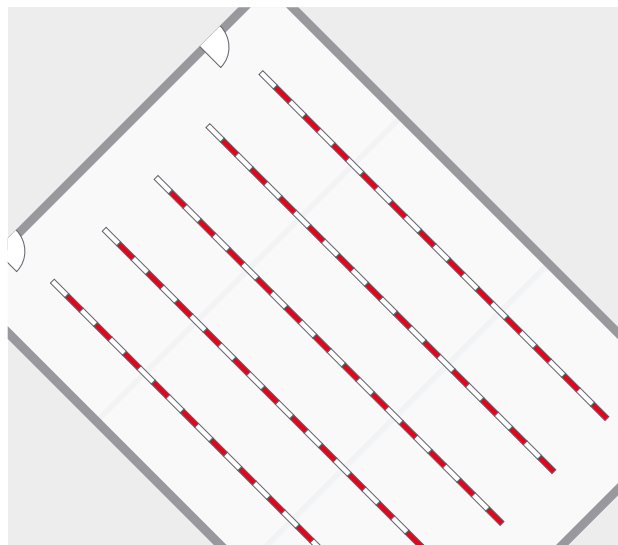


Licross 21 Opal



Planning your sports halls.

- **Ball-proof luminaires** protect athletes and lighting from damage.
- **Flexible lighting control adapts** the light level to the type of sport and use; areas can be switched separately.
- **Flat lights** prevent glare during overhead sports.
- **Neutral white light** (4,000 K) with good color rendering ensures optimum visibility.
- **Uniform illumination** eliminates dark zones.



Solutions:

- **Sport 31**
- **Highbay 11**
- **FL 21**
- ...

Standards and regulatory requirements:

	Illuminance		Uniformity	Glare limitation
	E_m lx		U_o	UGR
	required ¹	modified ²		
Sports hall school sports	300	500	0.6	22
Sports hall regional competition e.g. Badminton	500 according to EN 12193		0.4	

1) Corresponds to the required minimum value according to the table in EN 12464-1.

2) The higher, modified value according to the table in EN 12464-1 must be applied if the visual conditions deviate from the standard conditions, e.g., for particularly demanding visual tasks, unfavorable contrast ratios, or safety-critical work areas.



Spitzenbasketball mit Tradition

6x Deutscher Meister
37 54 54 94 91 92 93 94 95 96

OLYMPIA
STÜTZPUNKT
HERKULESDIENST FÜR NATURE

MLP



Selected products for your **sports halls**.



Sport 31

Sport 31

- **Flexible:** lumen packages for every ceiling height
- **Efficient:** 137 lm/W
- **Ergonomic:** glare-free ($UGR \leq 22$)
- **Future-proof:** DALI-2 control
- **Sustainable:** 100,000 h service life



FL 21 iQ

FL 21 iQ

- **Flexible:** various light distributions, sizes, and mounting options
- **Efficient:** 150 lm/W, precise light control
- **Future-proof:** smart interface, iQ control unit
- **Sustainable:** replaceable components, easy upgrades, 100,000 h service life

Highbay 11



Highbay 11

- **Flexible:** various light distributions, sizes, and mounting options, for heights from 6 to 30 m
- **Efficient:** 211 lm/W
- **Ergonomic:** glare-free ($UGR \leq 22$), ball-proof
- **Future-proof:** DALI-2 control
- **Sustainable:** 50 % lighter than others, replaceable components, easy upgrades, 100,000 h service life



Lighting for
outdoor spaces.



Light that **supports education.**

Light for the entire campus – from sports facilities to sidewalks and parking lots.

Uniform, glare-free, and eco-friendly lighting. With intelligent control, the lighting adapts flexibly to usage and time of day, reducing energy consumption and light pollution.

Unforgettable sporting events, a safe atmosphere throughout the campus, and reduced energy costs.

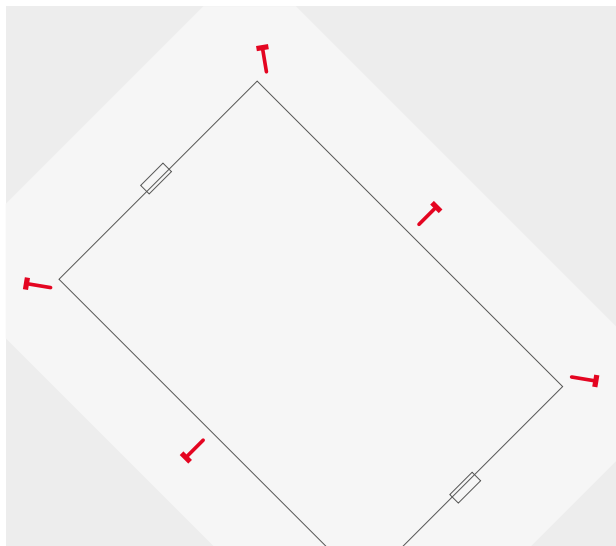
A quantum leap for your campus.

Areas of application:

- Sports fields
- Sidewalks
- Parking lots

Planning your sports fields.

- **Uniform, glare-free illumination:** For a safe sporting environment and an inspiring atmosphere.
- **Preventing light pollution:** Precise light control reduces light spill and protects the environment.
- **Flexibility:** Intelligent control adjusts the light to usage and time of day, reducing energy consumption.
- **Emergency lighting:** Uniform, glare-free illumination of access routes, stairs, and spectator areas.



Solutions:

- FL 11
- FL 21
- ...

Standards and regulatory requirements:

	Illuminance	Uniformity	Glare limitation
	$E_{h,av} \text{ lx}$	$E_{h,min} / E_{h,av}$	GR
	required ¹		
School sports field (class III)	75	0.5	55

1) Complies with EN 12193.





Selected products for your **sports fields.**

FL 11

- **Flexible:** various light distributions, sizes, and mounting options, 360° rotatable modules
- **Efficient:** 144 lm/W, precise light control
- **Future-proof:** DALI-2/DMX-RDM control
- **Sustainable:** < 1% light pollution, insect-friendly, replaceable components, easy upgrades, 100,000 h service life



FL 11



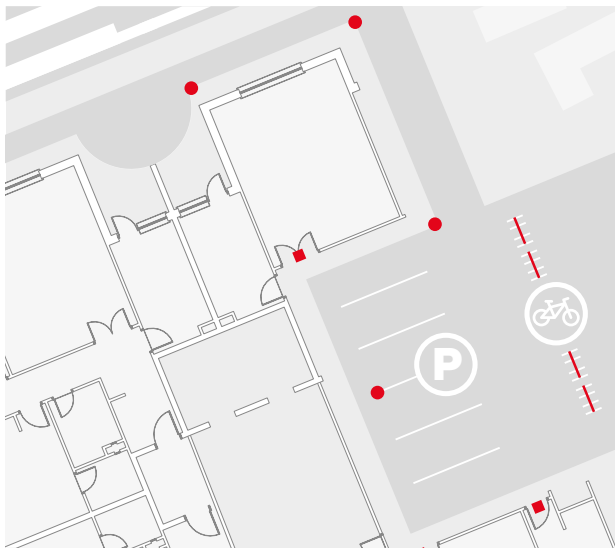
FL 21 iQ

FL 21 iQ

- **Flexible:** various light distributions, sizes, and mounting options
- **Efficient:** 150 lm/W, precise light control
- **Future-proof:** smart interface, iQ control unit
- **Sustainable:** replaceable components, easy upgrades, 100,000 h service life

Planning your outdoor areas.

- **Highlight danger spots:** Illuminate driveways, stairs, and emergency exits.
- **Increase safety:** Properly illuminate parking lots and pathways.
- **Weather resistance:** Only use high-quality, weatherproof luminaires.
- **Orientation:** Colored lighting helps differentiate between areas.



Solutions:

- **Planea**
- **DL 11**
- **SL 21**
- **FL 21**
- ...

Standards and regulatory requirements:

	Illuminance	Uniformity	Glare limitation
	E_m lx	U_0	UGR
	required ¹		
Outdoor parking lot	20	0.25	-
Outdoor sidewalk	5	0.25	-

1) Complies with EN 12464-2.





Moore Building
School of Management

15

↑ Car
↑ The
↑ Ac
↑ On
↑ St
↑ Int
↑ Ar
↑ M
↑ S

Selected products for your **outdoor areas.**



FL 21 iQ

FL 21 iQ

- **Flexible:** various light distributions, sizes, and mounting options
- **Efficient:** 150 lm/W, precise light control
- **Future-proof:** smart interface, iQ control unit
- **Sustainable:** replaceable components, easy upgrades, 100,000 h service life



SL 21 iQ

SL 21 iQ

- **Flexible:** different sizes and light distributions
- **Efficient:** 160 lm/W
- **Future-proof:** smart interface, iQ control unit
- **Sustainable:** insect-friendly, 0 % light pollution, replaceable components, easy upgrades, 100,000 h service life

Canna

- **Flexible:** different sizes and light distributions
- **Efficient:** precise illumination
- **Future-proof:** Smart Interface, DALI-2 control
- **Sustainable:** insect-friendly, minimal light spill, 100,000 h service life

Canna



DL 11 iQ

- **Flexible:** various light distributions and mounting options
- **Efficient:** 160 lm/W, precise light control with silver coating
- **Future-proof:** Smart Interface, iQ control unit
- **Sustainable:** < 1 % light pollution, insect-friendly, replaceable components, easy upgrades, 100,000 h service life

DL 11 iQ



Planea



Planea

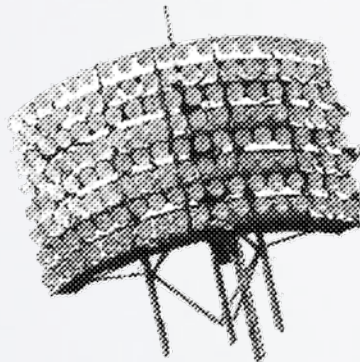
- **Flexible:** bollard and mast luminaires for streets, squares, and pathways
- **Efficient:** precise illumination
- **Future-proof:** Smart Interface, DALI-2 control
- **Sustainable:** insect-friendly, minimal light spill, 100,000 h service life

Outstanding lighting solutions for over 160 years.

SIEMENS

1862

Foundation of Siemens & Halske A.G.



1971
First 3.5 kW floodlight for the Olympic Games in Munich

1982
First HCL solution using a daylight system



1882
First street light in Berlin



1962
100 years of Siemens Lighting and first lighting test road

1980
First BAP50 louver luminaire

1987
First secondary system as the basis for the successful MirrorTec concept



1975
First trunking system

1949

Production in Traunreut





sITECO

1997

Company foundation SITECO

sITECO

OSRAM

2011
SITECO becomes part of OSRAM

2019
Sirius: first LED floodlight with TLCI 96

2020
Licross: the trunking system for Industry 4.0

2023 ...

SITECO becomes a leading solution provider

2023
Halliday Lighting becomes part of SITECO



2006/08
First LED office and street light

1998
Patent on micro-prism technology

2022/23
sixData and Bergmeister Leuchten become part of the SITECO family



2021
IoT revolution: SITECO iQ and Connect will shape the digital infrastructure of the future

2019

SITECO becomes an independent medium-sized company

sITECO

Stern Stewart Industries

Sales.

Australia

SITECO Lighting Australia PTY LTD
HQ South Tower Level 3
520 Wickham Street
Fortitude Valley QLD 4006
Phone +61 448 376 613
sales@siteco.au

Czech Republic

Siteco GmbH
Sokolova 696/32
619 00 Brno
contact-cz@siteco.com

Hungary

Siteco GmbH
contact-hu@siteco.com

New Zealand

SITECO Lighting Australia PTY LTD
HQ South Tower Level 3
520 Wickham Street
Fortitude Valley QLD 4006
ACN 643 095 523
Phone +61 448 376 613
sales@siteco.au

Romania

SITECO Romania
Andreea Luppa
Phone: +40 735 316 760
a.luppa@siteco.eu

Spain

SITECO Lighting Spain, S.L.
Av. Leonardo da Vinci 15
28906 Madrid
Phone +34 9100 29095
contact-ES@siteco.com

Benelux

SITECO Benelux
Marten Meesweg 8-10
NL-3068 AV Rotterdam
Phone +31 85 4000 454
contact-nl@siteco.com

Finland

SITECO GmbH, Finnish Branch
Business Park Kehämylly
Rajatorpantie 41 C
01670 VANTAA
contact-fi@siteco.com

Italy

SITECO Italy S.r.l.
Via Libero Temolo, 4
20126 Milan
Phone +39 320 0692561
contact-it@siteco.com

Norway

SITECO Norway AS
Engebrets vei 5
0275 Oslo
Phone +47 45 37 71 00
kundesenter@siteco.com

Serbia

SITECO Serbia
Ivan Lazarevic
Dositejeva 1a
11 000 Belgrad
Phone: +381 69 5444 802
i.lazarevic@siteco.com

Sweden

SITECO Sweden AB
Källbäckstrydsgatan 3
507 42 Borås
Phone +46 8128 70 422
contact-se@siteco.com

Bulgaria

SITECO Bulgaria
Andreea Luppa
Phone +40 735 316 760
a.luppa@siteco.eu

France

SITECO France Chez REGUS
7 rue Meyerbeer
75009 Paris
Phone +33 6 24 57 58 61
contact-fr@siteco.com

Moldova

SITECO Moldova
Andreea Luppa
Phone +40 735 316 760
a.luppa@siteco.eu

Poland

SITECO Poland Sp.z o.o.
Al. Jerozolimskie 94
00-807 Warszawa
Phone +48 22 462 49 30
a.kalisiak@siteco.pl

Slovakia

SITECO GmbH
contact-svk@siteco.com

United Kingdom

SITECO UK Ltd
Hexagon Tower,
Crumpsall Vale, Blackley
Manchester, M9 8GQ
Phone +44 3300 555 209
contact-uk@siteco.com

Croatia

SITECO Croatia
contact-hr@siteco.com

GCC Countries

Siteco Lighting LLC
Phone +97155 5107860
contact-uae@siteco.de

Montenegro

SITECO Montenegro
Miomir Milacic
Phone +382 67 674 876
m.milacic-ext@siteco.com

Portugal

SITECO Portugal
Cesar Campos
Phone +351 91 171 44 85
contact-pt@siteco.com

Slovenia

SITECO GmbH
Ljubljana branch
Trg republike 3
1000 Ljubljana
Phone +386 51 373615
contact-si@siteco.si

Other Countries

SITECO GmbH
Georg-Simon-Ohm-Straße 50
83301 Traunreut, Germany
contact-export@siteco.com

Contact.

Siteco GmbH

Georg-Simon-Ohm-Str. 50
83301 Traunreut, Germany
Phone +49 8669 330
info@siteco.com

siteco.com

