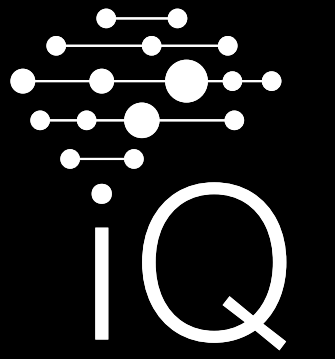
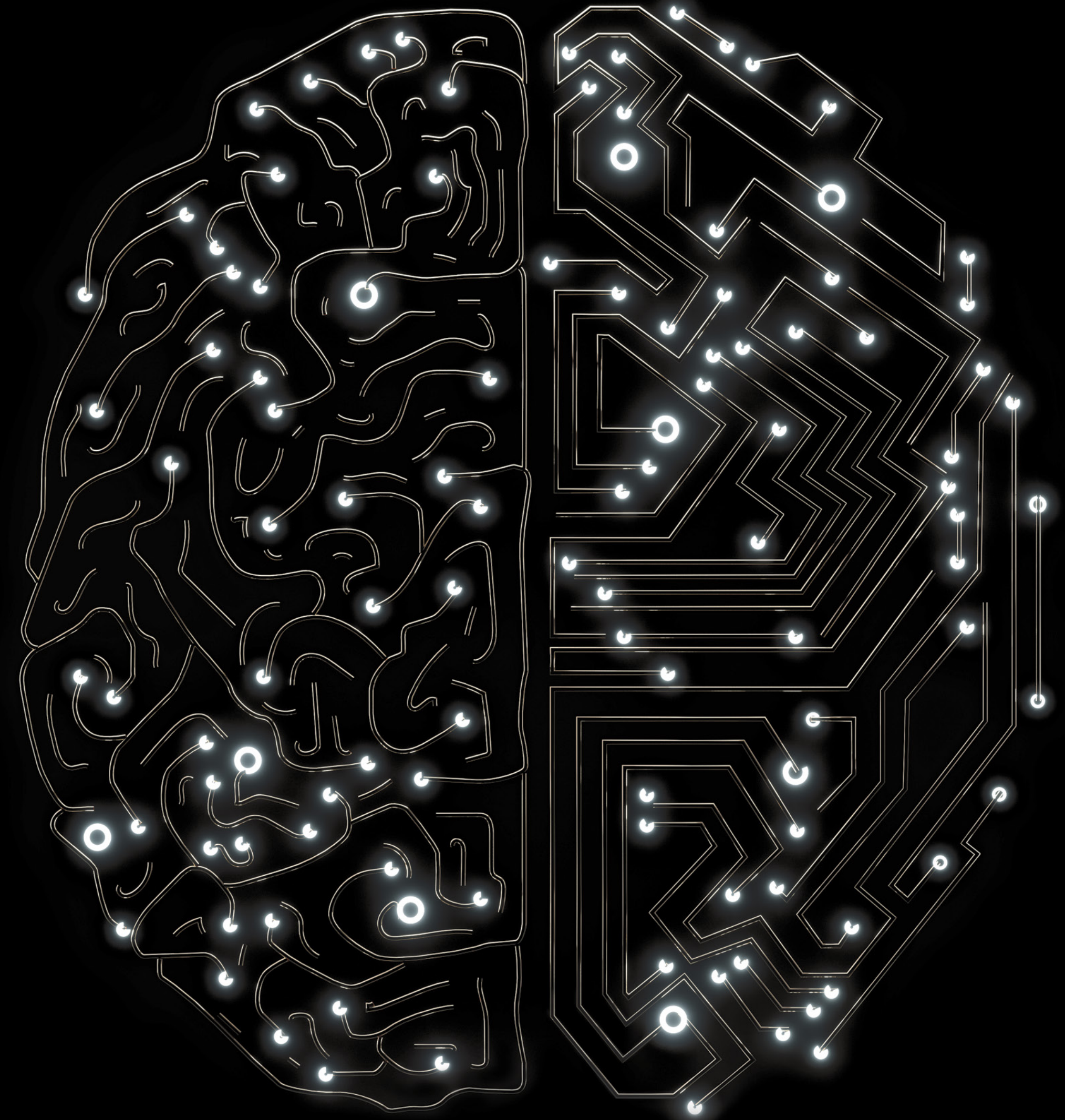


siteco



# Quick Start Guide

Handheld for SITECO iQ app



# Get started with the SITECO iQ app via Handheld – easy and fast.

## If the luminaire supports Desk-Remote, you can use our Handheld to: Inventory. Manage. Configure.

The 5EA6HBR02 Handheld is a mobile end device equipped with an RFID interface and other functions. Using the iQ app, you can configure, manage and inventory your Desk-Remote luminaires without opening the packaging.

This requires an active data connection, achievable either through a mobile data card or alternatively via a Wi-Fi connection.

Please note: To download the SITECO iQ app from the Google Play Store, you need a Google account. You can also create an account before downloading the iQ app (see step 5 on the next page).



### Contents of the packaging for the Handheld:

- Handheld Chainway
- Charging cable USB-A to USB-C
- Power adapter
- Hand strap

### Important instructions – read before use:

The charging time is 2 hours.

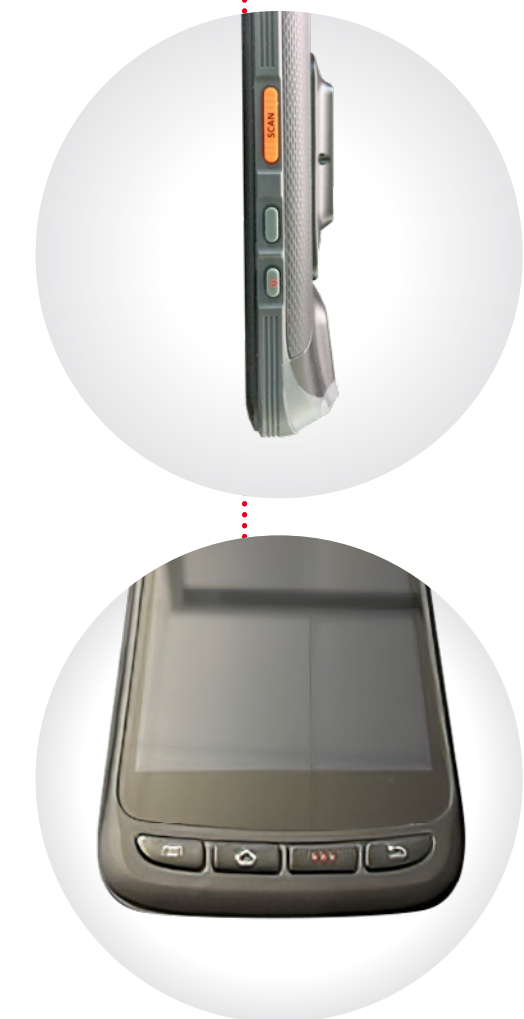
### Relevant buttons

on the **left** side of the device:

- Power button: on-off switch
- the SCAN buttons located on the sides of the device are currently not necessary for using the iQ app via handheld. These buttons are reserved for possible future functional additions.

on the **front** of the device (from left to right):

- Main menu
- Home: Return to home screen
- Enter: Confirm current selection
- Back button: Return to previous step of the setup



The SITECO iQ app for our Android Handheld is available on the Google Play Store.



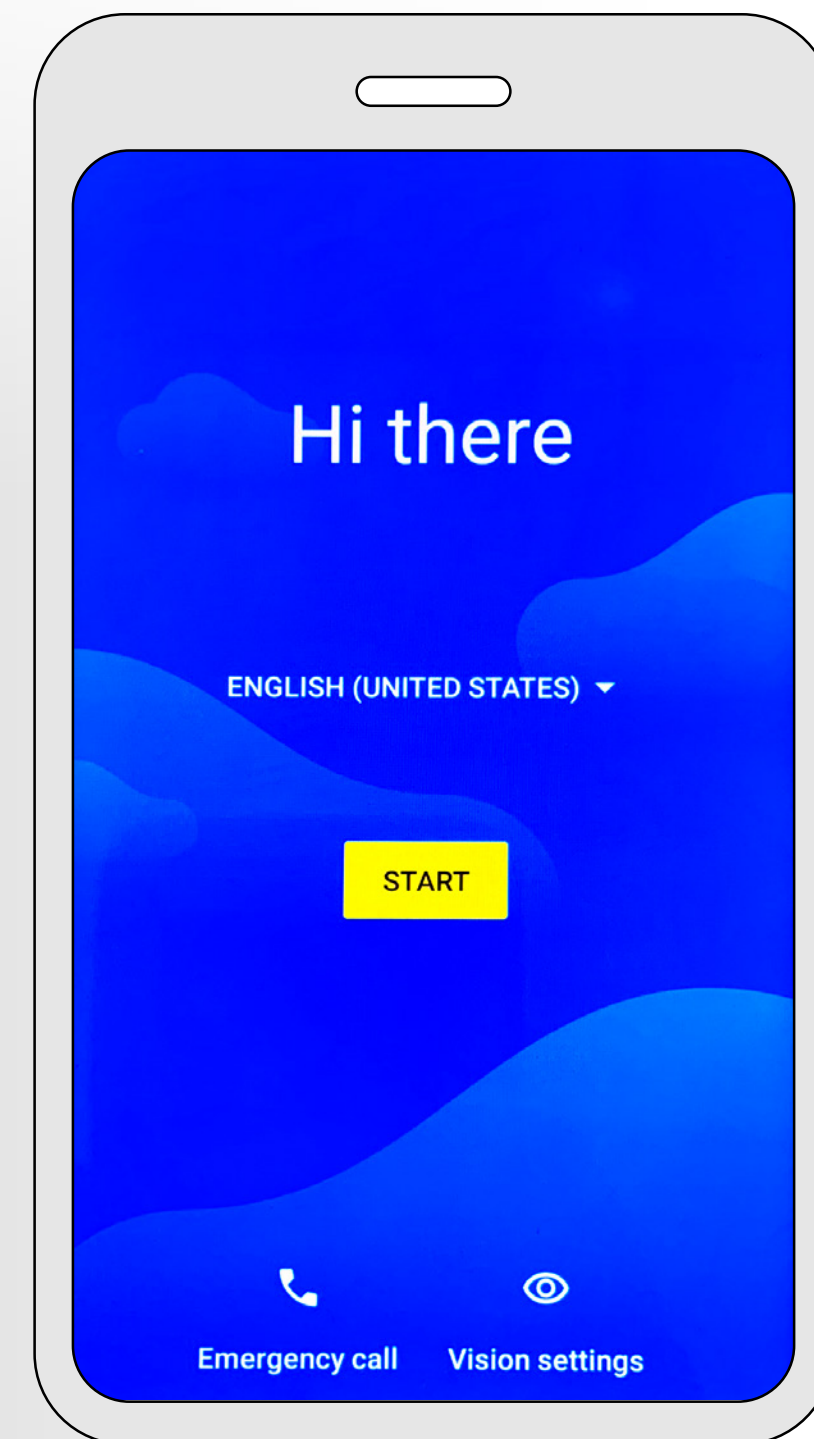
# Get started with the SITECO iQ app via Mobile Device – first steps.

## ↓ Commissioning the device

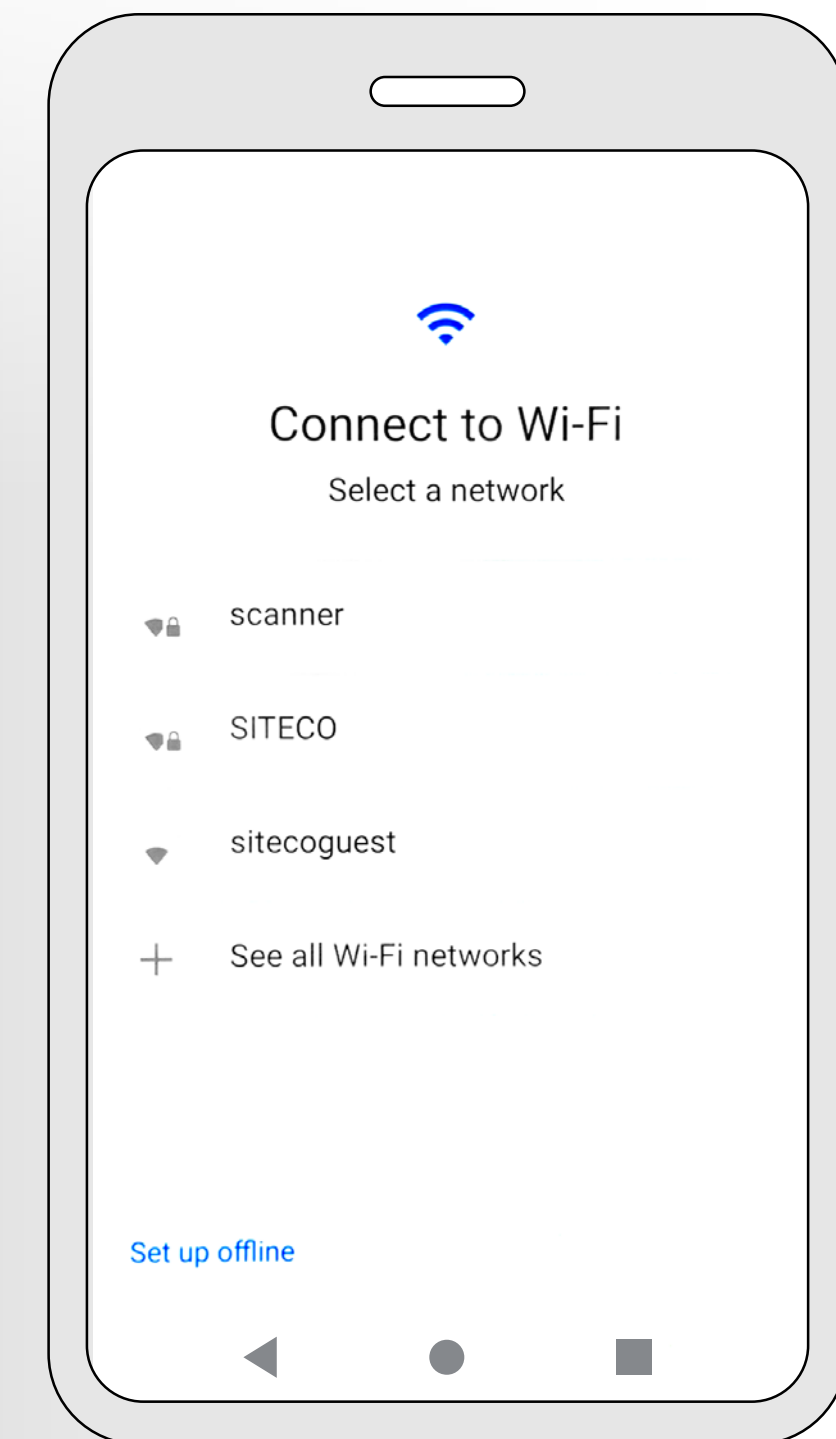
- 1 Charge the Handheld. Then insert the data card or SIM card on the right-hand side of the device.



- 2 Now select the desired language from the drop-down menu.

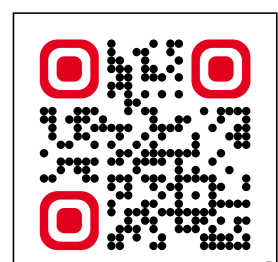


- 3 If you are not using a data card, you can also connect the handheld via a Wi-Fi network.



### How to use the Handheld:

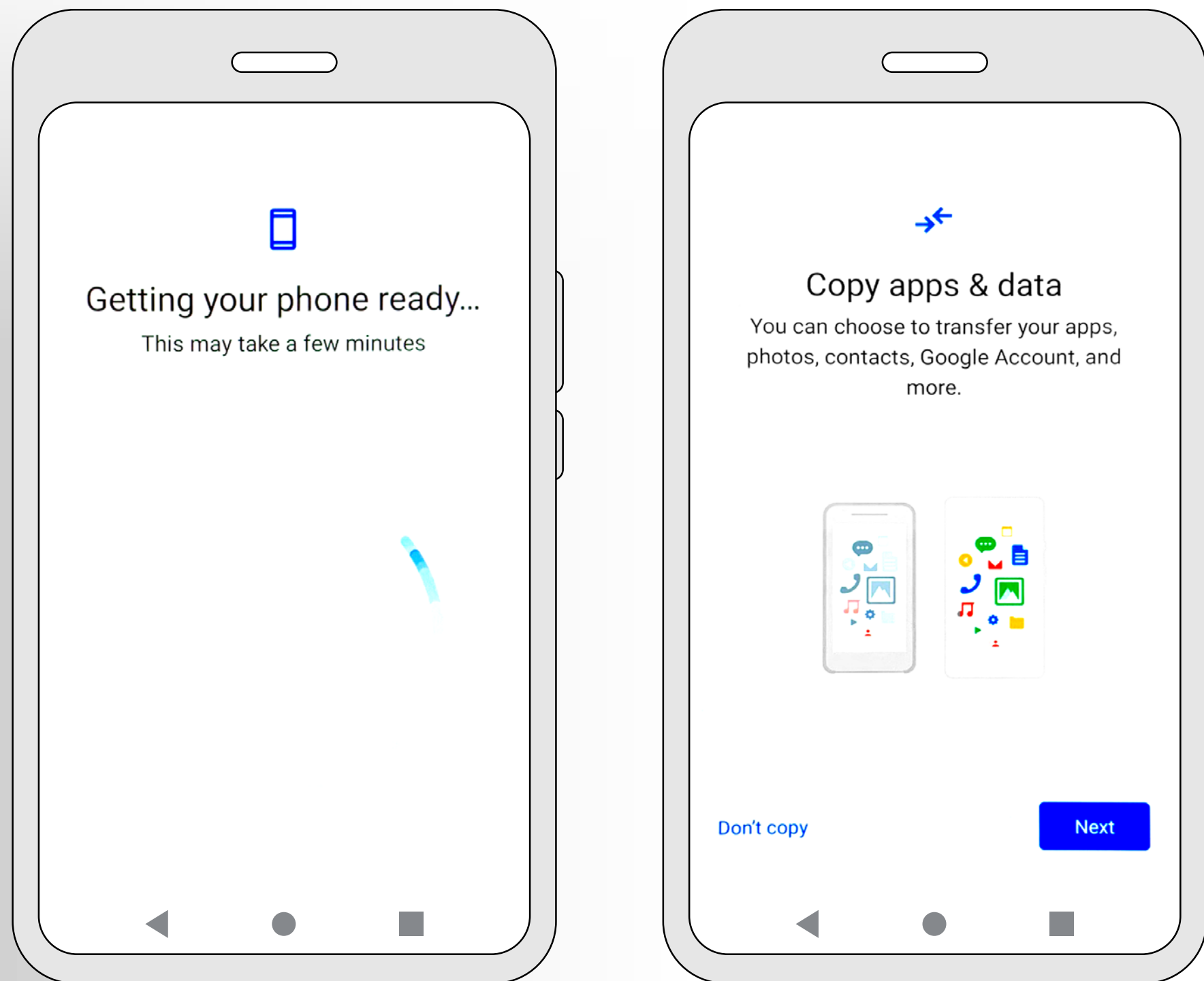
Complete steps 1 to 6 and ensure that the device is charged. Then place the Handheld on the designated Desk-Remote points on the packaging of the luminaire or position it at a maximum distance of 20 cm from the luminaire's RFID receiver. Now follow the necessary menu steps in the SITECO iQ app.



→ You will find detailed instructions on how to use the iQ app on our website and YouTube.

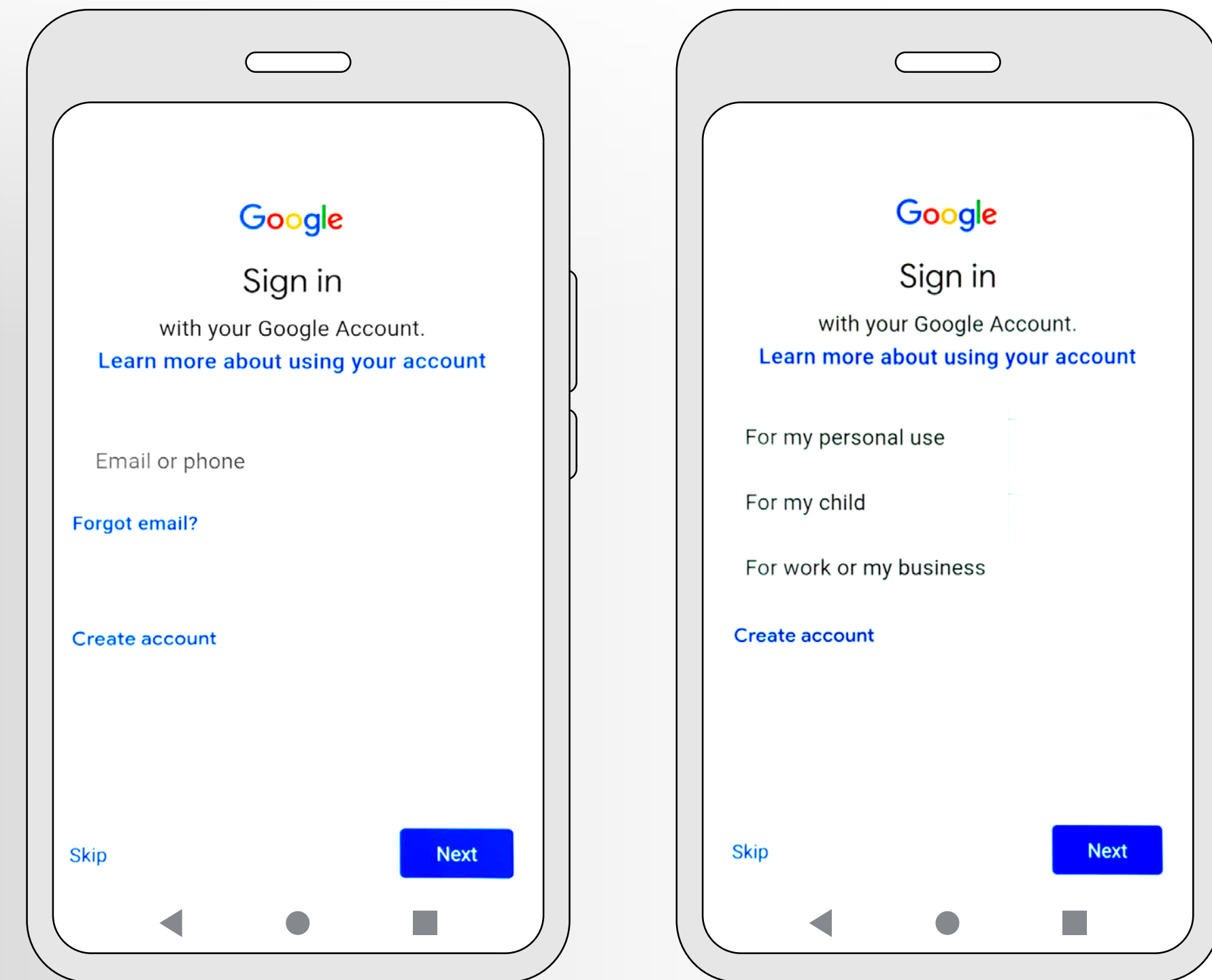


- 4** Now, proceed with the setup of the device. Please note: This is work equipment. You should not transfer private data or perform any imports from other end devices. Therefore, select “Do not copy” and complete the process until the account is created.



## ↓ Creating a Google account

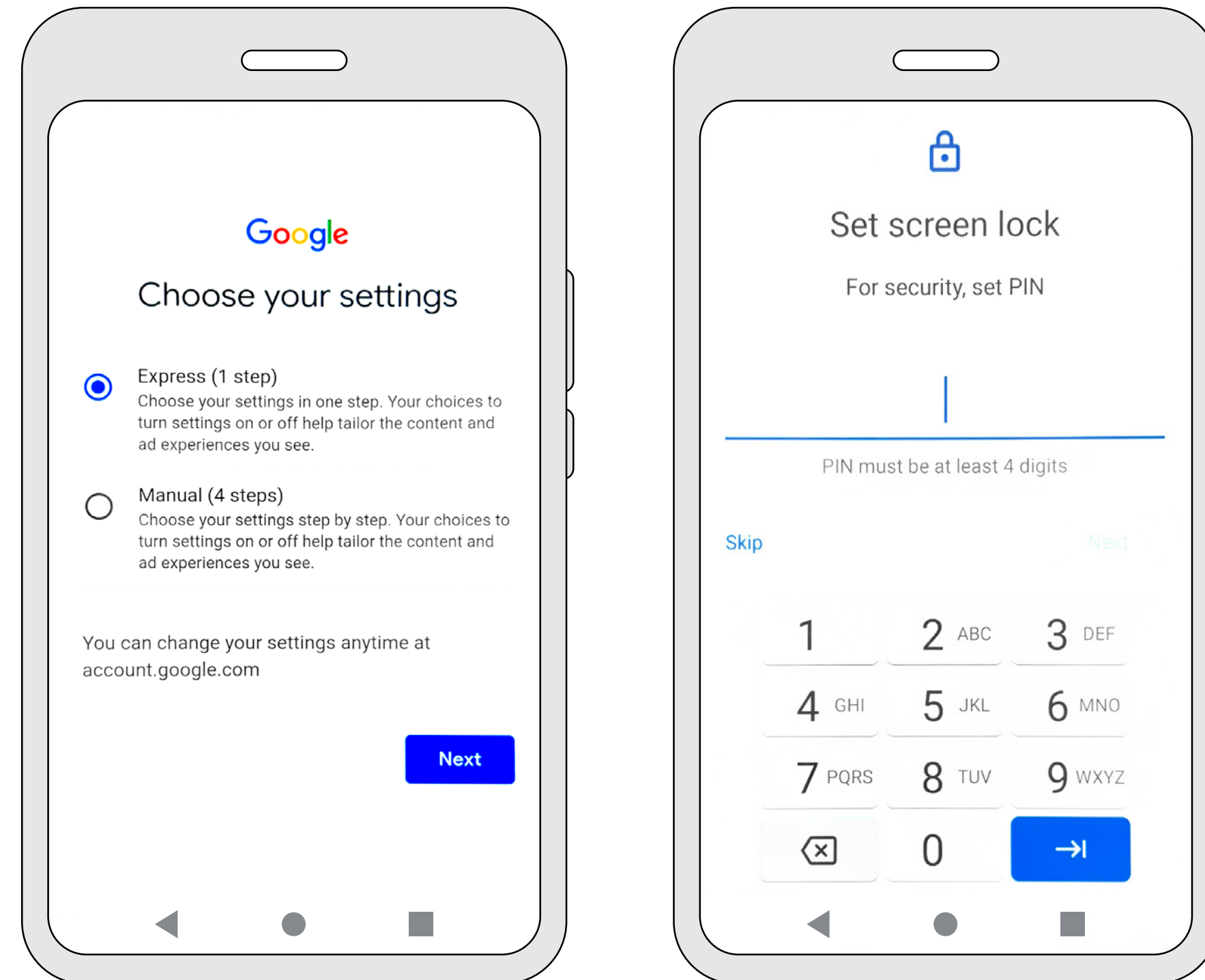
If you already have a Google account, you can now enter your details. If you do not have an account or a new account is required, please follow these instructions to create one.





- 5** When creating an account, select “For my personal use”, then confirm with “Next” and “Yes, I agree”. Settings can be made “Express” or “Manual”. We recommend “Express”, as otherwise some contents and charts may not be displayed.

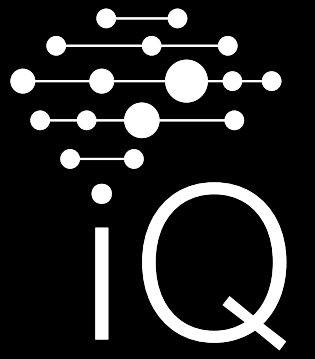
During account creation, you must select Google services and assistance systems as well as device protection (display pin). You should fully enable the Google services, otherwise you may not be able to use all features of the iQ app reliably. You can choose all other settings individually, but at your own risk, as we do not have access to them. After the last “confirmations”, the device is ready to use.



## ↓ Installing the SITECO iQ app

- 6 Open the Google Play Store and enter “Siteco iQ” in the search box. After installing the iQ app, the icon appears on the display (second page). You can now log in to the iQ app.





# Fancy more iQ?

For more information about the potential of our SITECO iQ app and other useful tips and tricks, please visit our website:

[www.siteco.com/iq/iqapp](http://www.siteco.com/iq/iqapp)



## Contact.

### Siteco GmbH

Georg-Simon-Ohm-Str. 50

83301 Traunreut, Germany

Tel. +49 8669-33-0

[info@siteco.com](mailto:info@siteco.com)

[siteco.com](http://siteco.com)

