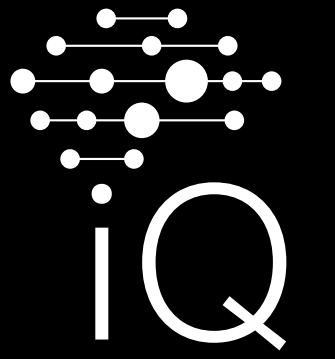


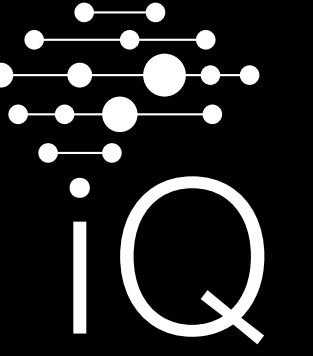
siteco



iQ app

Add existing luminaires to the iQ app that have been upgraded to Module 540 iQ.





Manage your light.

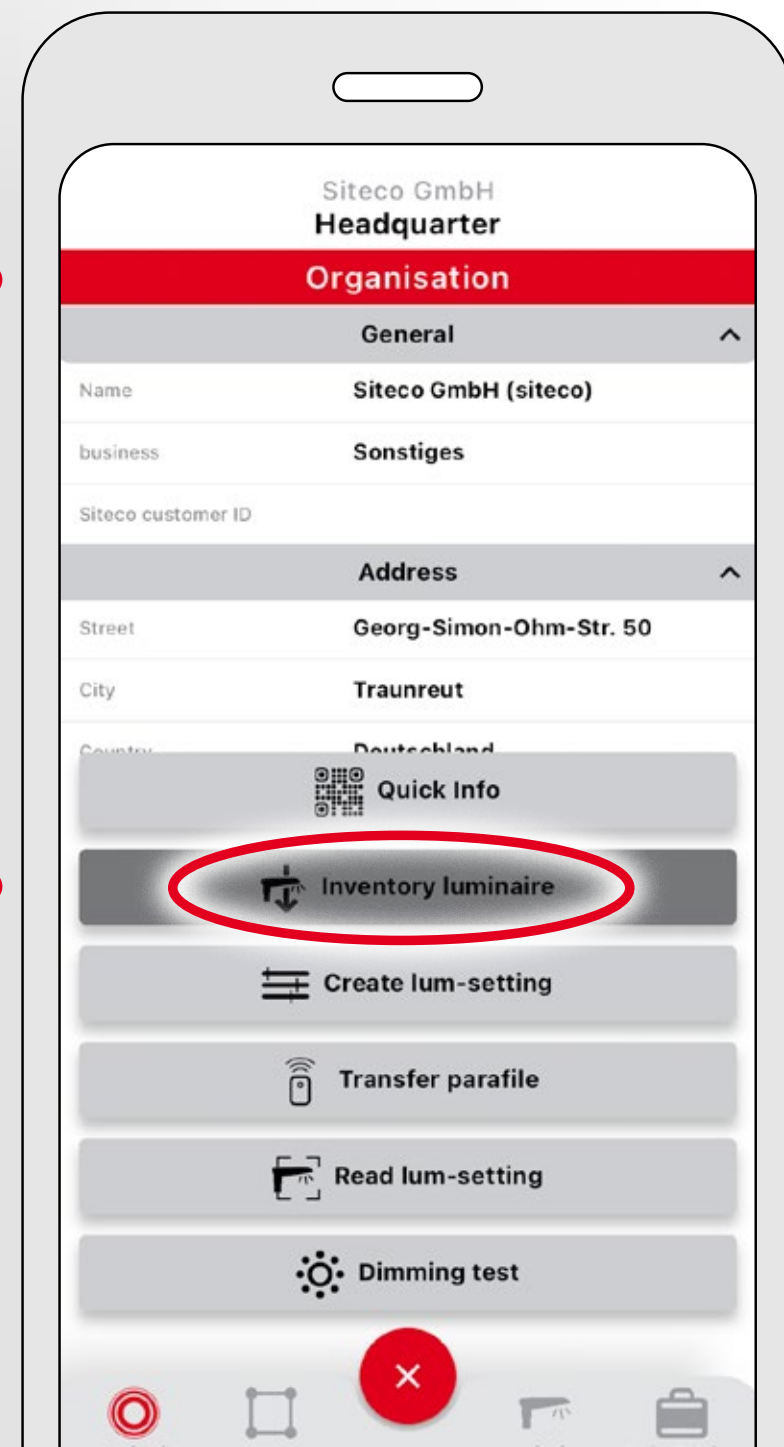
Today and in the future.

Existing urban luminaires can be equipped with iQ functionalities by a simple exchange of the Module 540. To be able to control the upgraded luminaire via iQ app, both the Module 540 iQ and the luminaire must be inventoried. These instructions show you how to do the inventory.

↓ Add existing luminaires with Module 540 iQ to the inventory. →

1.0 Start the inventory process.

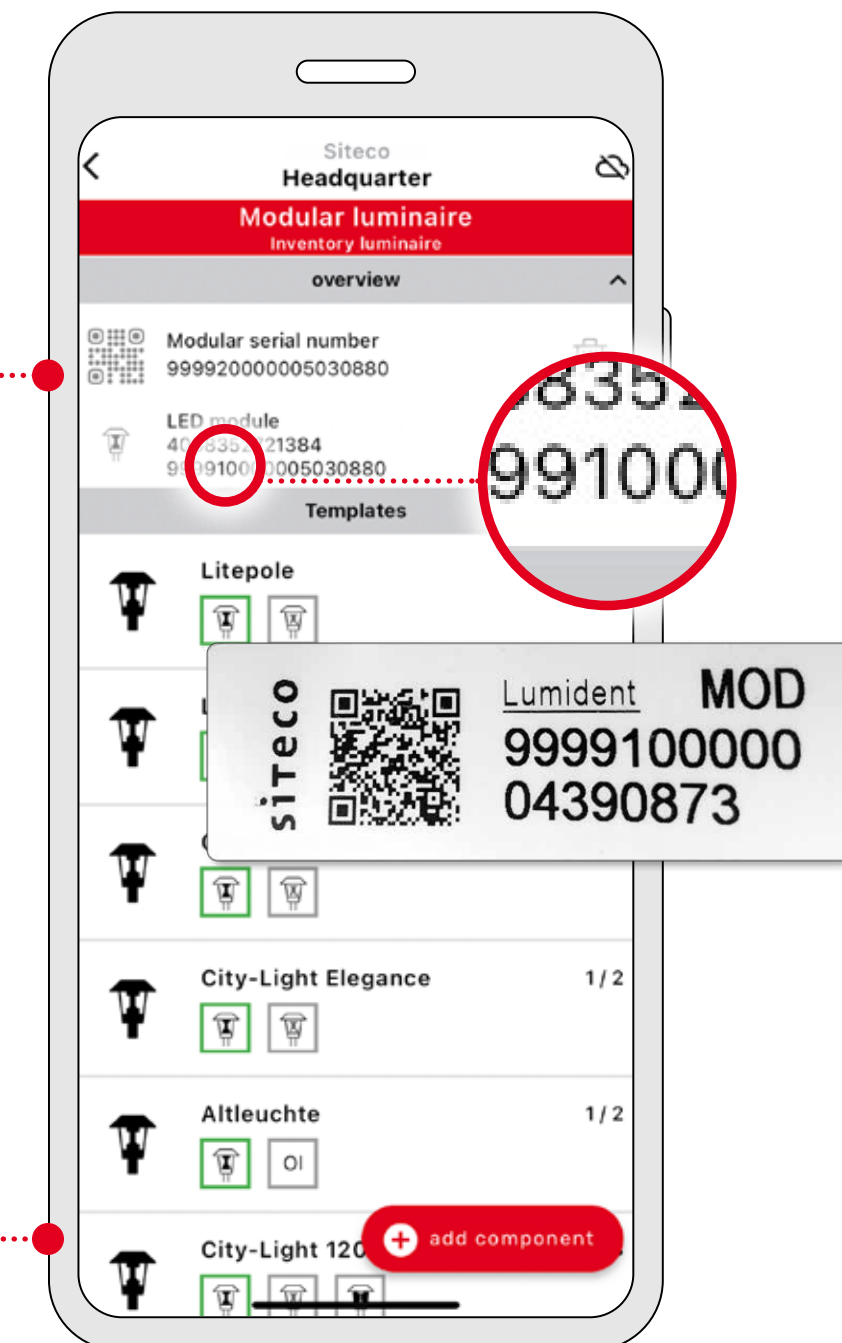
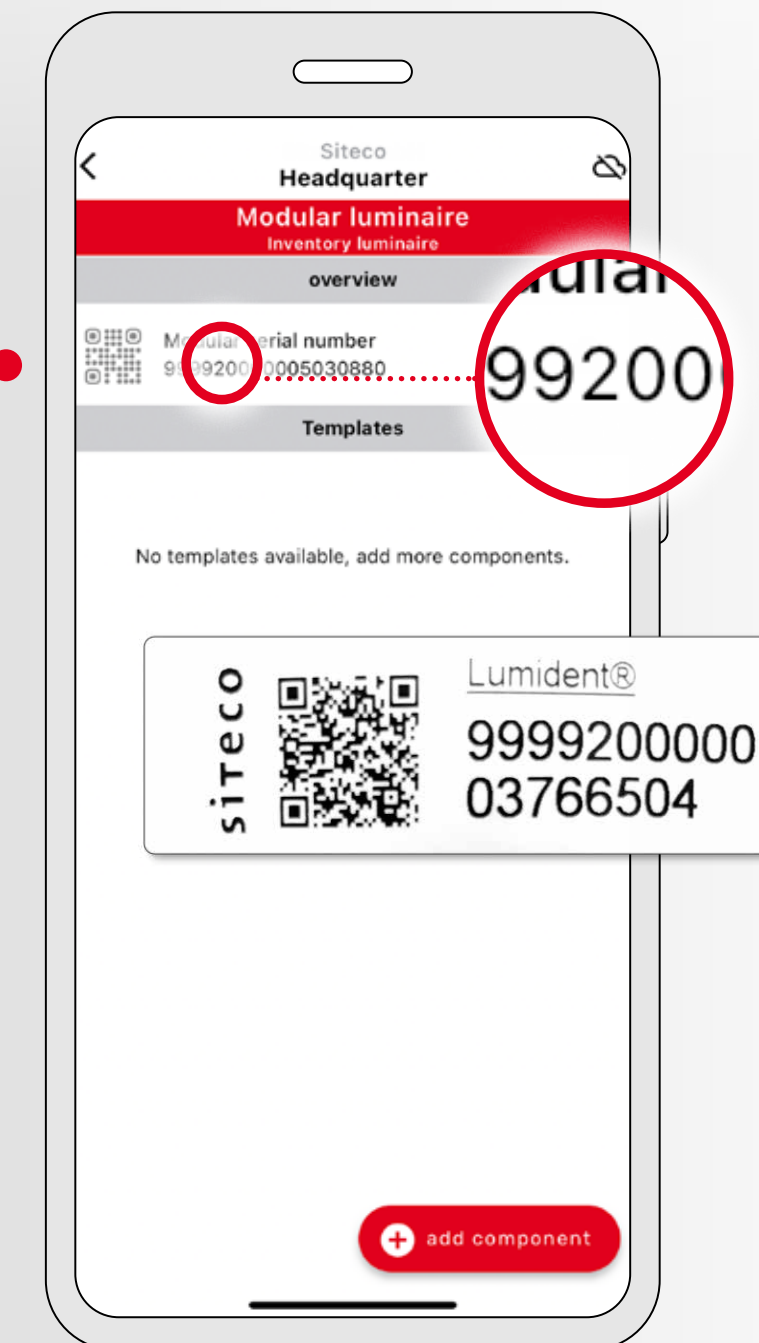
- A** Use the menu to select the organization to which you want to add the luminaire. If necessary, also select the area.
- B** Then select „Inventory luminaire.“ The process will be initiated and your device’s camera will be activated.



↓ →

2.0 Use your camera to scan the QR codes included in the packaging and with the Module 540.

- A** First, scan the QR code included in the packaging of the module. You have scanned the correct code if the **fifth digit is 2**.
- B** Now scan the second QR code attached to the module’s package. You have scanned the correct code if the **fifth digit is 1**.
- C** The app shows that additional components must be added to inventory the complete luminaire. You have two options to enter the necessary data.



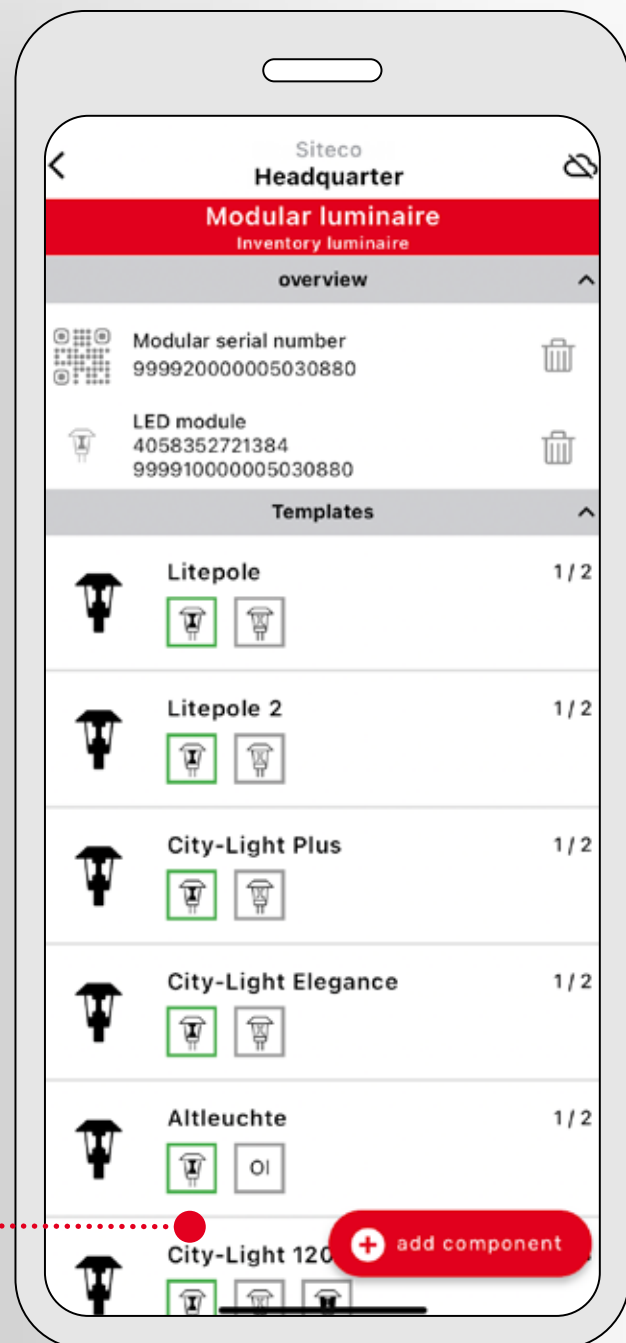


3.1 Option 1: Add additional components by manually entering serial and order numbers.

A Select "Add components". The camera of your device will be activated, and an input field for manual entry of the order numbers will appear.

B If available, scan the barcodes of the luminaire components. Otherwise, enter the order numbers manually.

This option only applies if the individual components of the luminaire are known. In general, not for all older components information can be retrieved via iQ app.

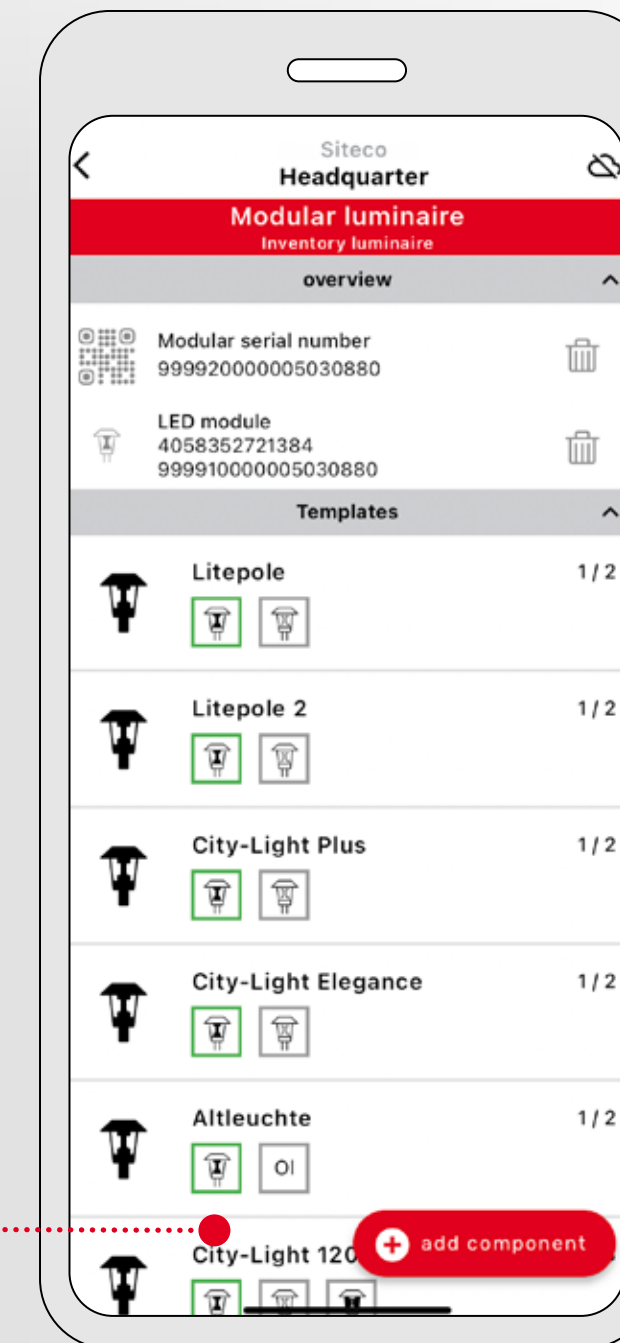


3.2 Option 2: Add additional components by entering a predefined order number.

A Select "Add components". The camera of your device will be activated, and an input field for manual entry of the serial or order numbers will appear.

B Enter the code **5XA540ALT** in the input field.

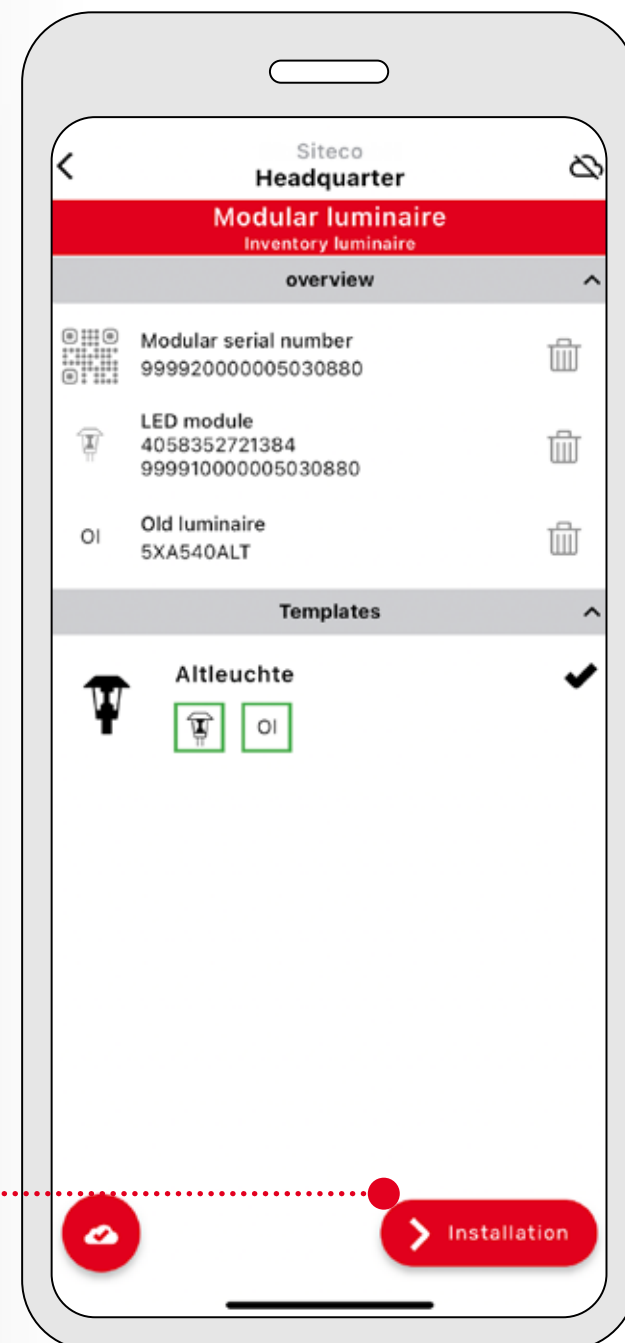
Note: This method can be used if you do not know the order numbers of the individual components or the luminaire was originally supplied as a complete system. In this case, additional information about the luminaire can be entered in the "Comment" field.





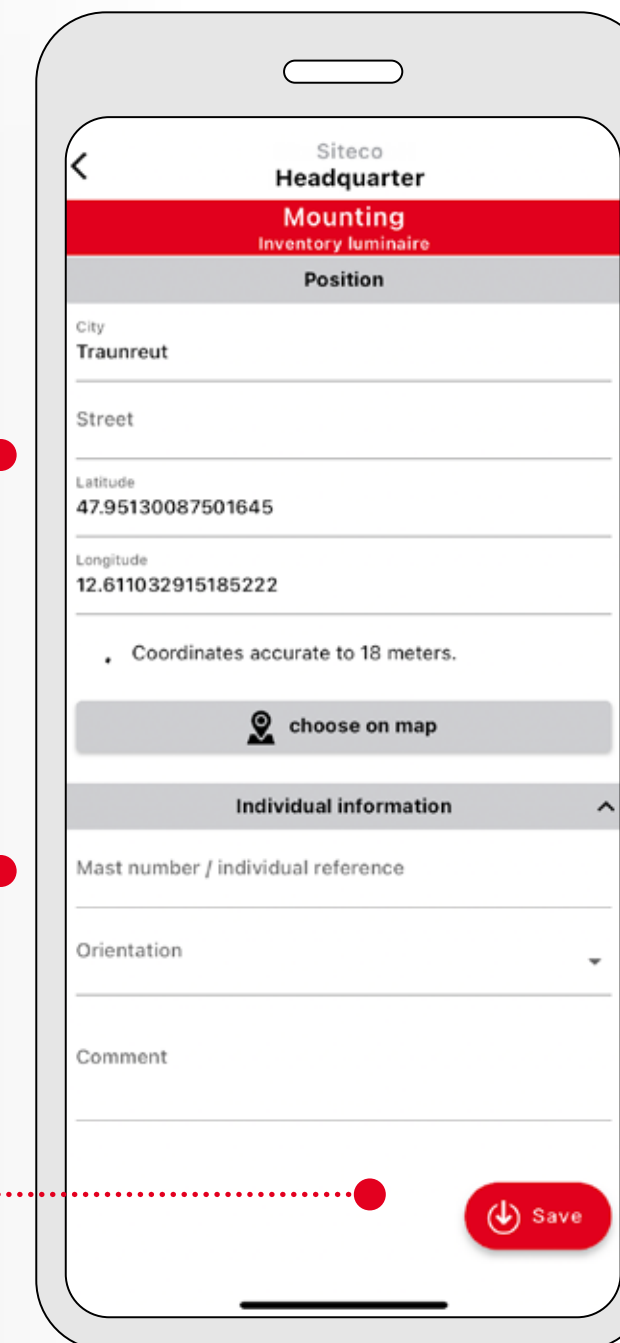
4.0 Complete data entry.

- A** When all components resp. the luminaire has been completely entered, all parts appear green. Also, a check mark is displayed.
- B** Now select “Installation” to document further information about the luminaire.



5.0 If desired, add the location of the luminaire.

- A** You can enter the location information manually or select it on the map.
- B** Optionally, you can enter supplementary information about the installation.
- C** Select “Save” to complete the inventory.



6.0 After saving, you will be asked if the inventoried luminaire should be used as a template for other luminaires.

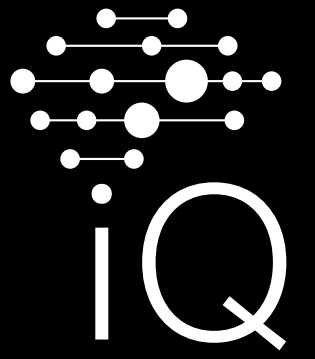
Select “Another luminaire” if you want to add a new luminaire using this template.

Now, all you have to do is scan the two QR codes for the new luminaire – first the QR code enclosed in the packaging of the Module 540 (fifth digit is 2), then the QR code attached to the module package (fifth digit is 1). All other components will be added automatically.

↓ **Manage luminaire via app.**

After a successful inventORIZATION, return to the main menu. You can now manage and operate your luminaire via iQ app as usual.

Note: For convenient internal documentation, place the QR code labels included with the package and the module on the inside of the mast door as well as on your documents.



Fancy more iQ?

For more information about the potential of our SITECO iQ app and other useful tips and tricks, please visit our website:

www.siteco.com/iq/iqapp



Contact.

Siteco GmbH

Georg-Simon-Ohm-Str. 50

83301 Traunreut, Germany

Tel. +49 8669-33-0

info@siteco.com

siteco.com

