

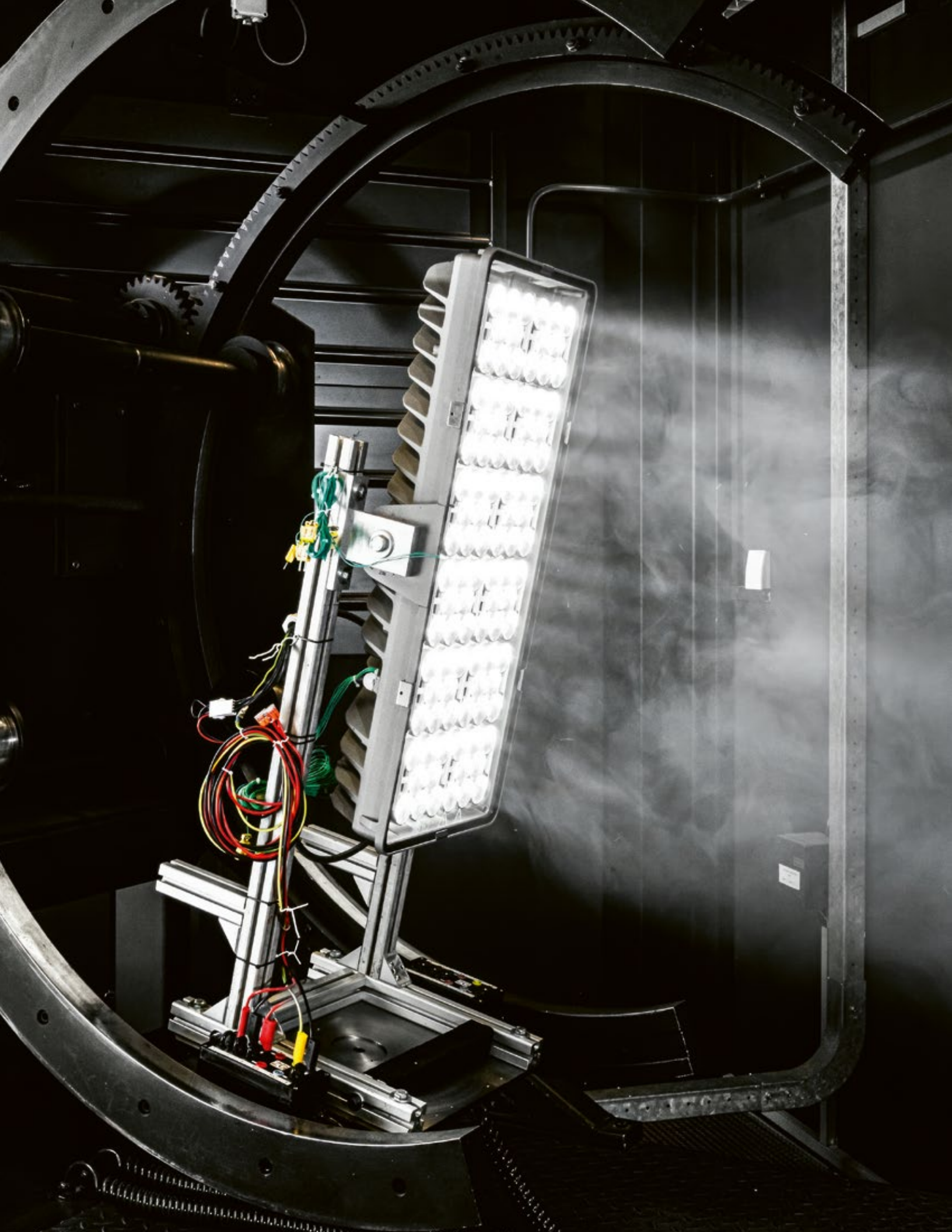
siteco

Made in  
Traunreut

# Future Tennis.

We take responsibility for  
your lighting solution.









# Lighting technology is our passion.

More than 200 patented lighting technologies and a holistic luminaire development from a single source – SITECO is a technology pioneer with more than 160 years of experience.

SITECO's holistic solution approach cover the entire spectrum: from planning and project planning to financing and operating your system.

**SITECO stands for exceptional lighting solutions – Made in Traunreut.**





## Solutions for every tennis court.

With our sophisticated portfolio ranging from high-end to practical lighting, we provide breathtaking illumination for every tennis court – from class I to class III.

Thanks to optimal visual comfort for players and spectators, we ensure goosebumps moments.



- Highly efficient operations with fewer luminaires thanks to a new light distribution system and long service life of up to 100.000 h
- Easy maintenance thanks to flexible ECG integration on the mast or luminaire
- Non-glare light with 0 % light emission without producing any light that can bother residents and nature
- Maximum flexibility and precision delivered by rotatable modules and adjustable light heads
- Needs-based light control with DALI 2, DMX RDM and SITECO Connect Sport
- High-quality, long-lasting manufacture with non-yellowing PMMA lenses, robust glass covers and die-cast aluminum housings

# Floodlight FL 11

**Pinpoint precision. Infinite possibilities.**

The Floodlight FL 11 is an energy-efficient, easily mountable, precisely controlled system that will exceed every expectation that you ever had about the visual comfort of players and spectators.



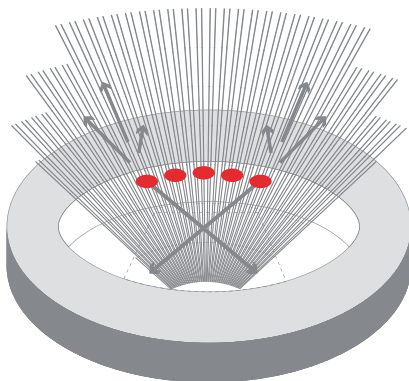


More information about **FL 11**

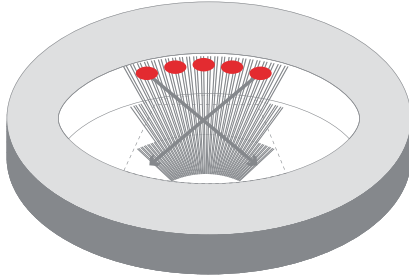
# Minimum light pollution with outstanding optics.

The focused application of light increases efficiency and reduces light immissions. Thanks to its clever construction and precise light distribution Floodlight FL 11 requires only minimal inclination to minimize light spill while providing optimum lighting conditions.

**We only use light where it is needed.**



Conventional floodlight systems generate increased light pollution – and therefore adversely affect the environment, adjacent areas and air traffic.



Through directed light with minimal upward inclination, our optical solutions minimize unnecessary light spill.







# Floodlight FL 21

Three sizes. One shared, consistent design.  
And all the details that modern lighting needs:  
Like, for example, abundant models for connecting  
and brand-new control features. This makes light  
not only flexible, but smart as well. Floodlight FL 21:  
the versatile multitasking with a high IQ!

**Absolutely exceptional:** IP66, IK08,  
CE certified, ENEC certified,  
D-mark certification, ballproof,  
suitable for swimming pools.

**Durable, exchangeable materials,**  
including non-yellowing PMMA  
lenses and glass cover.

**SITECO iQ Street Remote:** Light level can  
be suitably and conveniently adjusted over  
Bluetooth and the iQ app according to use.







More information about **FL 21**



● **Maximum glare control** thanks to an excellent asymmetric light distribution system.

● **High thermal stability:** up to 50° C outdoors, 40° C indoors.

● Exceptionally steady luminaire due to **high vibration stability**. Perfect for outdoor use in very exposed areas.

● **Extreme snow load stability** with a pressure load of 400 kg/m<sup>2</sup> – that means a snow load zone with snow depths of up to 1.5 m.

● Luminaire that preserves the natural darkness of night **with zero light pollution** and a warm white light color.

# SiCompact

Only the real top performers earn this name.

## Just like the previous generation:

Wherever you see SiCompact on the outside, you know top performance is on the inside. These floodlights have been perfectly adapted for the outdoors to withstand all kinds of adverse weather conditions. Four sizes and six power classes give you versatility like you've never had before.

**SiCompact: Highly efficient performance packed into an award-winning design.**

Ready to deliver the performance you need.



**Simple, fast installation**  
with mounting bracket and  
preassembled connection cable

**No light emissions**  
ULOR 0 % at 0° inclination

**Greater environmental protection**  
thanks to new, insect-friendly  
3,000-kelvin light colour

**Flexible use** thanks to three sizes  
and lumen packages from 4,400 to 37,000 lm  
(with new mini and midi power classes)

**NEW: Highly economical and cost effective**  
thanks to an increase in efficiency of up to 44 %  
(compared with previous generation: 4,000 K)

**Precise, homogeneous surface illumination**  
for optimum visibility and exceptional safety

**NEW: Improved surge protection** (up to 10 kV) and  
extended **temperature range** (-40 °C to +45 °C)



# SiCompact maxi.

## The new top performer.



At lofty heights above 10 meters, the SiCompact maxi shows how it's done:  
The largest member of the family evenly and efficiently illuminates large areas.

● **Strength in every detail**, including up to 70,000 lumens and a service life of 100,000 hours (L80)

● **Highly efficient operation and homogeneous illumination** thanks to PL32 light distribution

On request in 5,000K



● **No light emissions**  
ULOR 0% at 0° inclination

● **Wide range of control options**  
through DALI

● **Future-proof and a secure investment**  
thanks to replaceable ECG

● **Simple, quick installation**  
with a mounting bracket and connection in the housing space





# Turnkey Solutions.

How much work  
can we take off  
your hands?

Outstanding lighting technology provides the perfect basis. Beyond that, we also aspire to make a significant contribution to the future viability of our customers.

This is why SITECO solutions cover the entire spectrum: from planning and project management to financing and operation of your system.

**SITECO takes responsibility for your light!**

# Lighting is teamwork. Truly the best lighting solution for you.

## Would you rather focus on your core business?

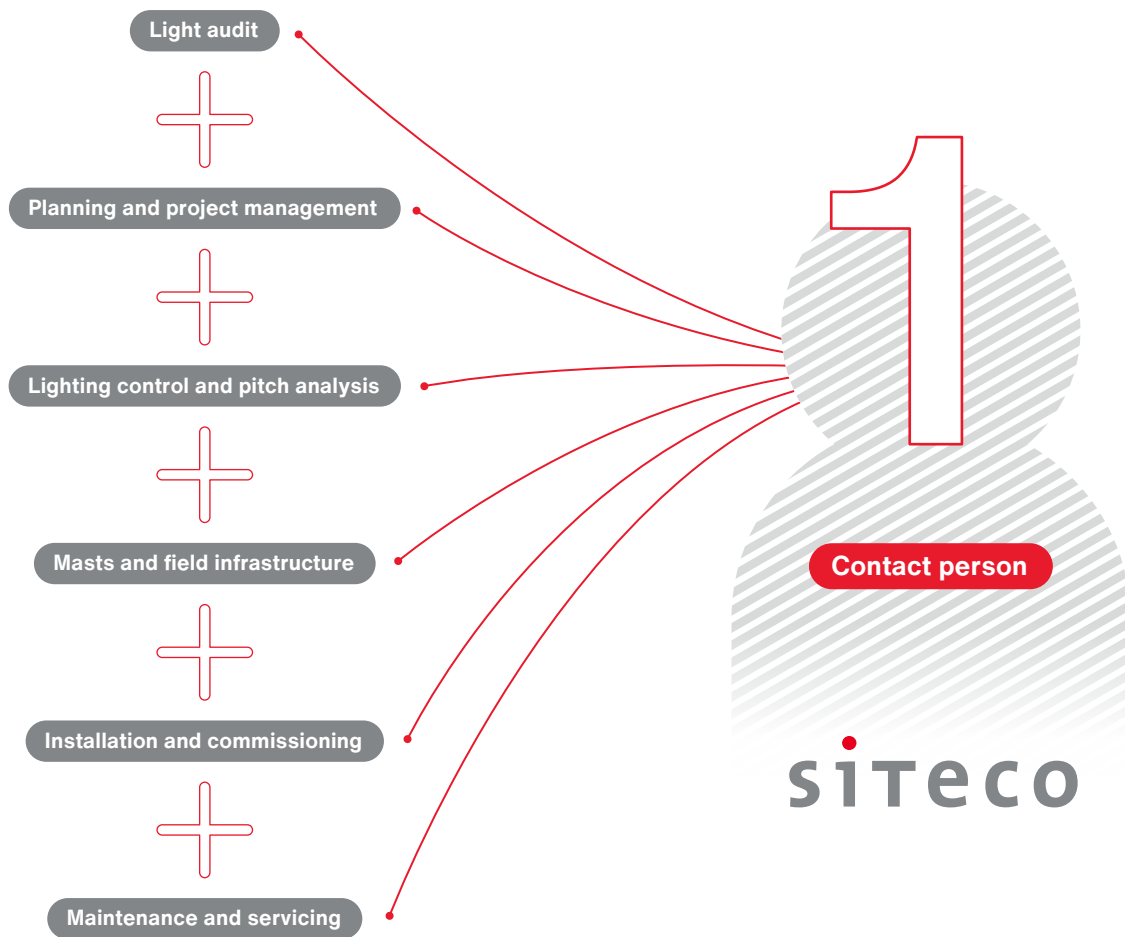
No problem: SITECO is the right partner by your side. We support you from the idea all the way to commissioning your lighting. We take care of funding subsidies and financing options. And once the lighting is up and running, we'll make sure everything is operating smoothly and your energy consumption is as low as possible.

## How does our project management help you?

- Accompany project on site
- Coordinate and control project
- Install and accept lighting systems
- Assign and outsource partner companies
- Optimize and conclude contracts
- Organize tests and measurements
- Document project







## Our service is modular. You choose where we support you.

For each service module, we have trained specialists with many years of experience in the electrical industry. And if required, our professional project managers will manage your project for you. You get your reliable contact person who coordinates all steps. So that everything happens at the right time. So that all partners are well integrated. For the entire project. At any time.

# Tennis fields by SITECO.

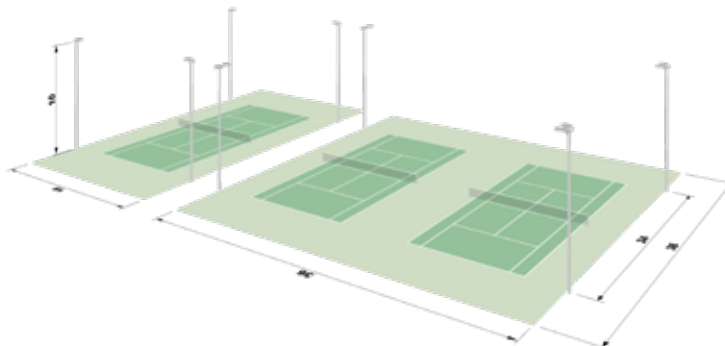
## Floodlight FL 11 maxi pro Remote

### 1st Class 500 lx

Description	Single court	Double court
	4 masts, 10 m height, 4 floodlights, 1,388 W	4 masts, 10 m height, 8 floodlights, 1,388 W

#### Asset values

Average illuminance $E_{av}$	540 lx	606 lx
Uniformity $E_{min/av}$	0,79	0,77
Glare Rating (GR)	44	48



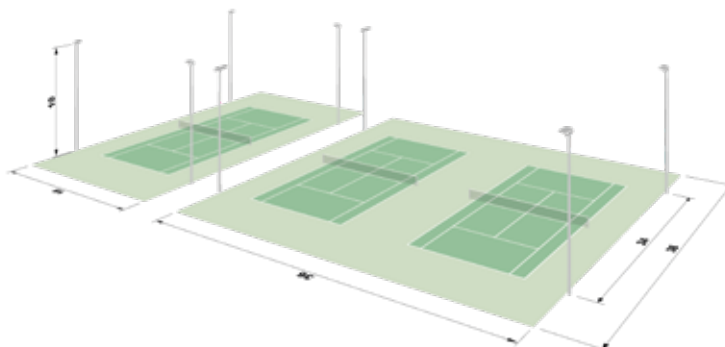
## Floodlight FL 11 maxi Remote

### 2nd Class 300 lx

Description	Single court	Double court
	4 masts, 10 m height, 4 floodlights, 947 W	4 masts, 10 m height, 8 floodlights, 947 W

#### Asset values

Average illuminance $E_{av}$	365 lx	398 lx
Uniformity $E_{min/av}$	0,79	0,74
Glare Rating (GR)	44	49



## Floodlight FL 21 iQ midi

### 2nd Class 300 lx

Description	Single court	Double court
	4 masts, 10 m height, 12 floodlights, 270 W	4 masts, 10 m height, 20 floodlights, 270 W

#### Asset values

Average illuminance $E_{av}$	342 lx	351 lx
Uniformity $E_{min/av}$	0,72	0,71
Glare Rating (GR)	39	48

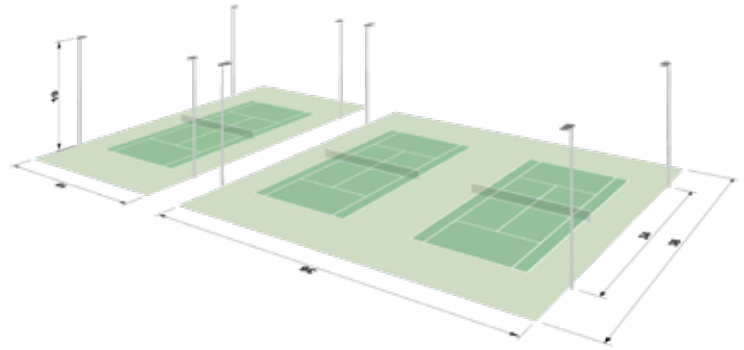




### SiCompact 31 maxi

#### 2nd Class 300 lx

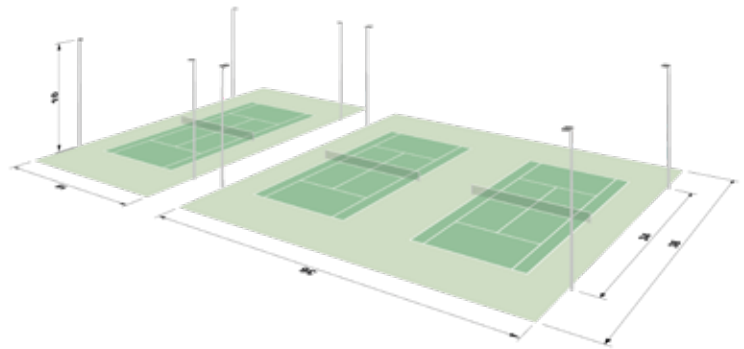
Description	Single court	Double court
	4 masts, 10 m height, 8 floodlights, 490 W	4 masts, 10 m height, 12 floodlights, 490 W
<b>Asset values</b>		
Average illuminance $E_{av}$	303 lx	354 lx
Uniformity $E_{min/av}$	0,84	0,81
Glare Rating (GR)	36	44



### SiCompact 31 maxi

#### 3rd Class 200 lx

Description	Single court	Double court
	4 masts, 10 m height, 4 floodlights, 490 W	4 masts, 10 m height, 8 floodlights, 490 W
<b>Asset values</b>		
Average illuminance $E_{av}$	203 lx	245 lx
Uniformity $E_{min/av}$	0,72	0,66
Glare Rating (GR)	39	46

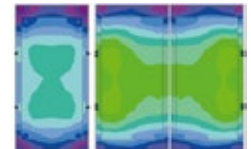
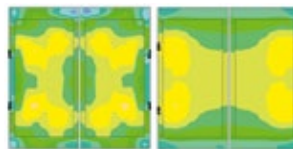
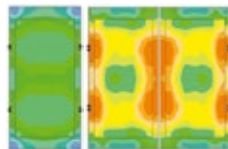
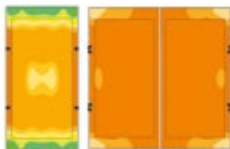


### Photometric parameters

#### 1st Class 500 lx

#### 2nd Class 300 lx

#### 3rd Class 200 lx



# Savings calculation for your lighting and installation of a 4-pole system with FL 11.

**3t CO<sub>2</sub>**  
saved per year

	Old system	New system
Luminaire type	8 × 2,000 W HQI	FL 11 maxi 917 W
<b>Annual energy consumption kWh*</b>	<b>8,800</b>	<b>3,668</b>
<b>Annual operating costs €</b>	<b>1,656</b>	<b>440</b>
Energy	1,056	440
Maintenance	600	low maintenance
<b>Annual operating savings €</b>		<b>-1,216</b>

Reduction in operating  
costs by

**70%**

**-70 % cost savings**

\* Additional savings can be realized with SITECO Connect Sports.

## Contact.

### Siteco GmbH

Ivan Lazarevic

Country Sales Manager Serbia

Tel. +381 69 5444 802

i.lazarevic@siteco.com

[siteco.com](http://siteco.com)