

Order No.: 5EA44EN01 | GTIN (EAN): 4069025166265

Product description: SConWi,SmartPlugCelNoise



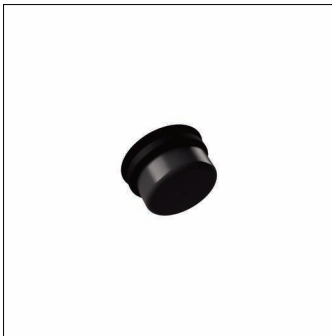
SITECO Connect WirelessSmart Plug Cellular Noise, multi-sensor, multi-sensor, communication: local mesh radio network, EGPRS, NB-IoT NB2, LTE Cat M1, 5G, 4G, 2G, 2.4GHz, D4i type A, control: remote setup and operation, local setting and operation with USB stick, local setting and operation with smartphone app, manual, by time, by timer, by weekday, by AstroDim calendar, by daylight, via API, with radio clock, optionally via radio push button, sensor technology: GALILEO, GLONASS, GNSS, GPS, inclination sensor, noise sensor, Smart Interface below, The usage fees for remote access via web application and mobile communications (LTE CAT M1 / NB IoT NB2 / EGPRS) are included in the scope of delivery with a term of 5 years. This individually extendable runtime starts when the device QR code is scanned into a system, Logarithmic DALI dimming curve preset. Can be switched to linear via software, installation type: screw fastening, installation location: to the luminaire, of plastic, voltage: 24V, voltage type: DC, multi-sensor, protection rating (complete): IP65, certification: CE, packaging unit: 1 piece

IP 65 

Wt. (kg): 0.1
GTIN (EAN): 4069025166265

Order No.: 5EA44EN01 | GTIN (EAN): 4069025166265

Detailed technical description: SConWi,SmartPlugCelNoise



Key data

- System family: SITECO Connect 31 Wireless
- Product type: multi-sensor
- Product name: SITECO Connect Wireless
- Order No.: 5EA44EN01

Lighting technology | Lamps | Control gear

Component 1

Operating device:

- Control: D4i, Smart Interface below, The usage fees for remote access via web application and mobile communications (LTE CAT M1 / NB IoT NB2 / EGPRS) are included in the scope of delivery with a term of 5 years. This individually extendable runtime starts when the device QR code is scanned into a system, Logarithmic DALI dimming curve preset. Can be switched to linear via software

Certificates, Standards

- Protection rating: IP65
- Temperature range (operation): -40..+70°C
- Standard: according to Zhaga book 18
- Certification, designation: CE

Material, Colour

- housing: plastic, transparent, colour-backed, dark grey
- Colour specification: dark grey

Mounting

- Mounting method, mounting location: screw fastening, to the luminaire
- Mounting height: 4..12m

Electrical connection

- Nominal voltage: 24V, DC

Dimensions, Weight

- Diameter: 82.5mm
- Height: 60mm
- Weight: 0.1kg