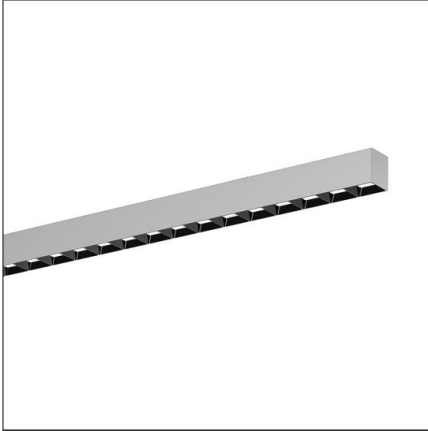


Lichttechnischer Prüfbefund

Familie
Silica® 21

Bestell-Nr.: 51MX24TCTAS
EAN: 4058352801796

LP-Nummer
59276_139



Ausführung Anbauleuchte, Reflektor, schwarz, direkt strahlend, asymmetrisch strahlend, Tunable White

Bestückung LED 6500 K | CRI ≥ 80

Betriebsgerät EVG-DALI

Einstellung indiv. Einstellung

Bemessungswerte Nettolichtstrom = 8200 lm
Systemleistung = 81.1 W
Lichtausbeute = 101.1 lm/W

Seriendokumentation
03.05.2023

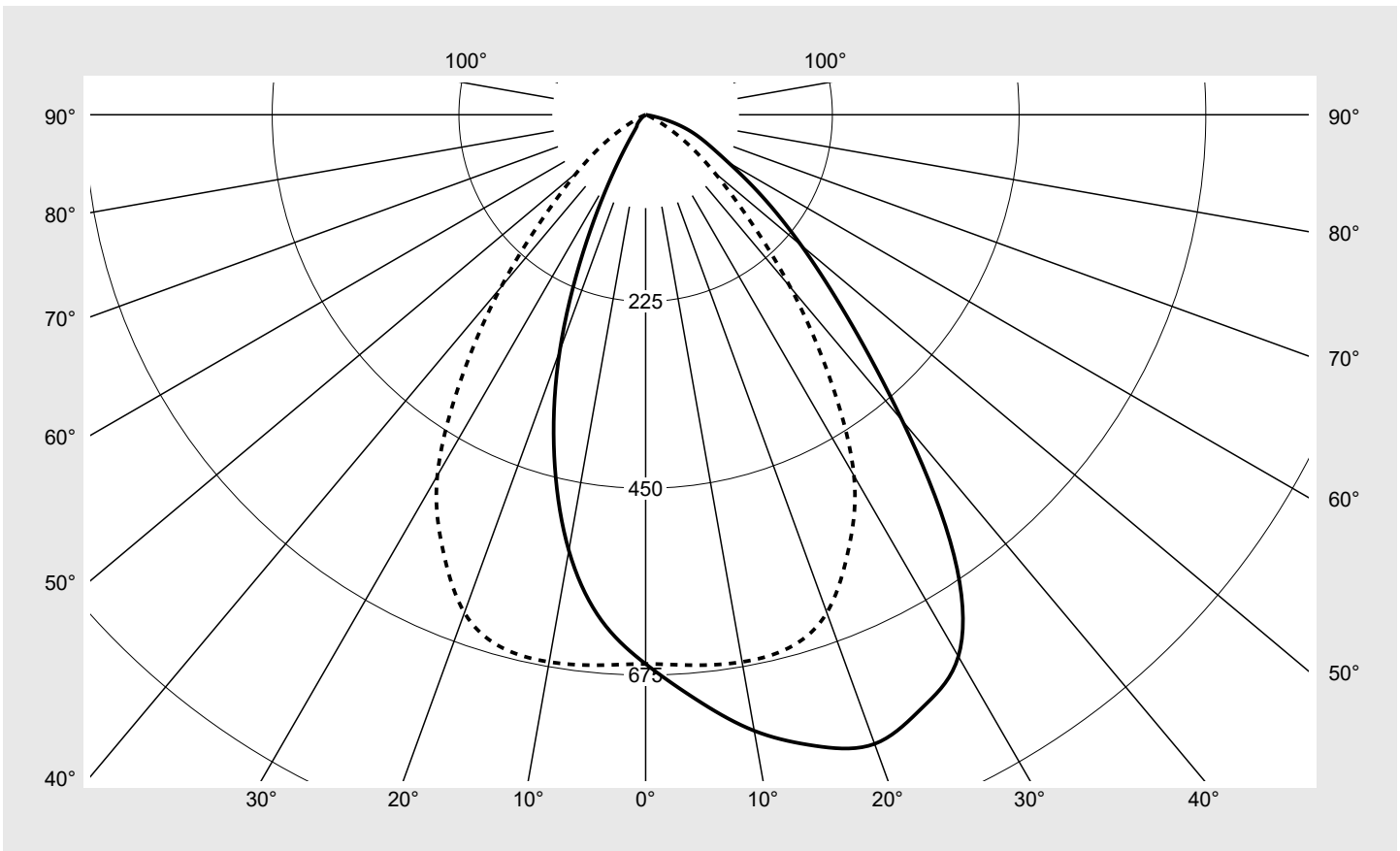
siteco

Lichtstärke in cd/klm

C180-0

C270-90

Imax: 826 cd/klm



Klassifizierungen

DIN 5040 A 6 0
CIE N1=74 N2=94 N3=99
N4=100 N5=100

Leuchtenbetriebswirkungsgrade

η_{LB} 100,0%
 ϕ_u 100,0%
 ϕ_o 0,0%

Messbedingungen

DIN EN 13032 und DIN 5032

Lichttechnischer Prüfbefund

Familie Silica® 21	Bestell-Nr.: 51MX24TCTAS EAN: 4058352801796	LP-Nummer 59276_139
Wertetabelle Lichtstärkemessung		Maximale Lichtstärke
		siteco

C- Ebenen	0°	15° 345°	30° 330°	45° 315°	60° 300°	75° 285°	90° 270°
γ	Lichtstärke in cd/klm						
0°	661.7	661.7	661.7	661.7	661.7	661.7	661.7
5°	707.6	708.8	701.1	699.3	690.5	675.5	665.7
10°	753.6	757.8	748.0	742.6	724.7	696.1	669.4
15°	787.1	797.8	794.5	785.9	757.5	712.8	665.2
20°	806.6	820.5	826.5	809.8	762.2	699.9	638.5
25°	788.4	808.5	803.3	771.2	718.7	652.8	578.2
30°	753.6	764.4	743.7	689.2	630.6	560.4	502.1
35°	647.7	641.5	628.6	587.6	522.2	450.6	386.5
40°	481.1	487.8	495.5	479.3	412.9	335.0	271.3
45°	342.4	353.2	375.0	376.0	318.8	233.5	172.1
50°	244.7	248.8	274.8	282.8	235.7	157.9	107.9
55°	171.3	177.5	199.4	208.0	176.1	105.7	63.9
60°	115.1	122.4	144.6	155.8	127.0	61.7	29.2
65°	81.5	86.1	102.4	113.9	84.3	29.7	9.5
70°	56.7	63.4	75.3	76.6	47.3	14.7	3.6
75°	29.5	36.2	51.5	39.1	25.8	8.2	1.2
80°	5.4	7.7	15.3	17.0	11.4	3.4	0.5
85°	1.1	1.3	2.4	2.3	0.8	0.3	0.3
90°	0.0	0.0	0.0	0.0	0.0	0.0	0.0
95°	0.0	0.0	0.0	0.0	0.0	0.0	0.0
100°	0.0	0.0	0.0	0.0	0.0	0.0	0.0
105°	0.0	0.0	0.0	0.0	0.0	0.0	0.0
110°	0.0	0.0	0.0	0.0	0.0	0.0	0.0
115°	0.0	0.0	0.0	0.0	0.0	0.0	0.0
120°	0.0	0.0	0.0	0.0	0.0	0.0	0.0
125°	0.0	0.0	0.0	0.0	0.0	0.0	0.0
130°	0.0	0.0	0.0	0.0	0.0	0.0	0.0
135°	0.0	0.0	0.0	0.0	0.0	0.0	0.0
140°	0.0	0.0	0.0	0.0	0.0	0.0	0.0
145°	0.0	0.0	0.0	0.0	0.0	0.0	0.0
150°	0.0	0.0	0.0	0.0	0.0	0.0	0.0
155°	0.0	0.0	0.0	0.0	0.0	0.0	0.0
160°	0.0	0.0	0.0	0.0	0.0	0.0	0.0
165°	0.0	0.0	0.0	0.0	0.0	0.0	0.0
170°	0.0	0.0	0.0	0.0	0.0	0.0	0.0
175°	0.0	0.0	0.0	0.0	0.0	0.0	0.0
180°	0.0	0.0	0.0	0.0	0.0	0.0	0.0

Lichttechnischer Prüfbefund

Familie Silica® 21	Bestell-Nr.: 51MX24TCTAS EAN: 4058352801796	LP-Nummer 59276_139
Wertetabelle Lichtstärkemessung		Maximale Lichtstärke
		sitEco

C- Ebenen	105° 255°	120° 240°	135° 225°	150° 210°	165° 195°	180°	Phi-Zone	Summe Phi-Zone
γ	Lichtstärke in cd/klm						Lichtstrom in lm/klm	
0°	661.7	661.7	661.7	661.7	661.7	661.7	4.0	4.0
5°	650.2	639.3	625.2	613.2	610.8	611.4	31.6	35.6
10°	635.2	606.4	576.8	550.6	537.8	533.0	62.6	98.1
15°	612.2	559.4	505.1	459.9	436.0	425.6	90.9	189.1
20°	565.1	489.6	412.9	351.3	314.5	302.5	113.2	302.3
25°	497.5	409.8	322.4	247.7	191.9	168.1	125.1	427.4
30°	412.4	312.9	216.8	129.1	80.3	67.5	124.5	551.9
35°	304.3	218.0	125.8	57.5	28.2	23.1	112.3	664.2
40°	195.6	132.8	62.5	24.4	17.4	16.1	92.9	757.1
45°	117.9	72.0	27.4	15.9	12.0	11.0	72.7	829.8
50°	70.5	38.1	14.7	10.4	7.3	6.2	55.1	884.8
55°	41.0	19.6	9.0	6.3	3.7	3.2	41.1	925.9
60°	17.5	9.3	5.4	3.7	2.8	2.3	29.2	955.1
65°	5.6	4.4	3.2	2.6	1.9	1.3	20.1	975.2
70°	2.1	2.0	1.8	1.4	1.0	0.6	13.6	988.8
75°	0.8	0.9	0.9	0.8	0.6	0.5	8.0	996.8
80°	0.5	0.5	0.5	0.5	0.4	0.4	2.7	999.5
85°	0.4	0.4	0.4	0.4	0.3	0.3	0.5	1000.0
90°	0.0	0.0	0.0	0.0	0.0	0.0	0.0	1000.0
95°	0.0	0.0	0.0	0.0	0.0	0.0	0.0	1000.0
100°	0.0	0.0	0.0	0.0	0.0	0.0	0.0	1000.0
105°	0.0	0.0	0.0	0.0	0.0	0.0	0.0	1000.0
110°	0.0	0.0	0.0	0.0	0.0	0.0	0.0	1000.0
115°	0.0	0.0	0.0	0.0	0.0	0.0	0.0	1000.0
120°	0.0	0.0	0.0	0.0	0.0	0.0	0.0	1000.0
125°	0.0	0.0	0.0	0.0	0.0	0.0	0.0	1000.0
130°	0.0	0.0	0.0	0.0	0.0	0.0	0.0	1000.0
135°	0.0	0.0	0.0	0.0	0.0	0.0	0.0	1000.0
140°	0.0	0.0	0.0	0.0	0.0	0.0	0.0	1000.0
145°	0.0	0.0	0.0	0.0	0.0	0.0	0.0	1000.0
150°	0.0	0.0	0.0	0.0	0.0	0.0	0.0	1000.0
155°	0.0	0.0	0.0	0.0	0.0	0.0	0.0	1000.0
160°	0.0	0.0	0.0	0.0	0.0	0.0	0.0	1000.0
165°	0.0	0.0	0.0	0.0	0.0	0.0	0.0	1000.0
170°	0.0	0.0	0.0	0.0	0.0	0.0	0.0	1000.0
175°	0.0	0.0	0.0	0.0	0.0	0.0	0.0	1000.0
180°	0.0	0.0	0.0	0.0	0.0	0.0	0.0	1000.0

Lichttechnischer Prüfbefund

Familie Silica® 21	Bestell-Nr.: 51MX24TCTAS EAN: 4058352801796	LP-Nummer 59276_139
------------------------------	--	-------------------------------

UGR-Tabelle		Standardraum									
		Blickrichtung quer zur Leuchte (C0)					Blickrichtung längs zur Leuchte (C90)				
Raumabmessungen											
x	y										
2H	2H	23,8	25,2	24,1	25,5	25,8	19,7	21,1	20,0	21,4	21,7
	3H	24,3	25,5	24,7	25,9	26,2	19,6	20,9	20,0	21,2	21,6
	4H	24,4	25,6	24,8	25,9	26,3	19,6	20,7	20,0	21,1	21,4
	6H	24,4	25,5	24,8	25,8	26,2	19,5	20,5	19,9	20,9	21,3
	8H	24,4	25,4	24,8	25,8	26,2	19,5	20,5	19,9	20,8	21,2
	12H	24,4	25,3	24,9	25,7	26,1	19,5	20,4	19,9	20,8	21,2
4H	2H	24,2	25,3	24,6	25,7	26,0	20,4	21,6	20,8	21,9	22,3
	3H	24,9	25,9	25,4	26,3	26,7	20,6	21,5	21,0	21,9	22,3
	4H	25,2	26,0	25,6	26,4	26,9	20,5	21,4	21,0	21,8	22,2
	6H	25,2	25,9	25,7	26,4	26,8	20,5	21,2	20,9	21,6	22,1
	8H	25,2	25,8	25,6	26,3	26,8	20,5	21,1	20,9	21,6	22,0
	12H	25,2	25,7	25,7	26,2	26,7	20,4	21,0	20,9	21,5	22,0
8H	4H	25,3	25,9	25,7	26,4	26,8	20,8	21,4	21,3	21,9	22,4
	6H	25,3	25,8	25,8	26,3	26,8	20,8	21,3	21,3	21,8	22,3
	8H	25,3	25,7	25,8	26,2	26,7	20,7	21,2	21,2	21,7	22,2
	12H	25,2	25,6	25,8	26,1	26,7	20,7	21,1	21,2	21,6	22,1
12H	4H	25,3	25,8	25,8	26,3	26,8	20,8	21,4	21,3	21,8	22,3
	6H	25,3	25,7	25,8	26,2	26,8	20,8	21,2	21,3	21,7	22,2
	8H	25,3	25,6	25,8	26,1	26,7	20,8	21,1	21,3	21,6	22,2

Leuchtdichten-Tabelle		Max. für $\gamma \geq 65^\circ$											
		Lichttechnische Abmessungen in mm: L = 2940 B = 49											
C-Ebenen	0°	15° 345°	30° 330°	45° 315°	60° 300°	75° 285°	90° 270°	105° 255°	120° 240°	135° 225°	150° 210°	165° 195°	180°
γ	Leuchtdichte in cd/m ²												
45°	27562.9	28428.1	30184.7	30263.3	25666.6	18797.7	13852.3	9489.8	5799.2	2204.0	1276.8	969.2	887.9
50°	21668.8	22034.2	24331.8	25043.2	20871.0	13979.9	9555.8	6242.1	3377.2	1298.8	921.0	647.9	548.0
55°	17000.6	17614.7	19791.0	20642.1	17474.7	10488.0	6337.0	4073.4	1945.7	894.2	625.9	371.6	316.8
60°	13100.4	13932.1	16460.8	17732.5	14462.4	7018.7	3324.5	1989.8	1061.7	617.9	418.9	315.1	267.0
65°	10972.2	11595.1	13794.3	15339.8	11352.4	3997.6	1276.4	758.8	589.3	437.2	343.6	252.9	172.5
70°	9442.1	10551.3	12528.0	12744.8	7864.7	2441.0	596.3	348.7	337.8	298.1	236.7	168.1	101.2
75°	6479.9	7957.8	11329.0	8595.1	5684.8	1807.3	269.8	169.6	200.6	190.9	169.6	141.0	109.7
80°	1765.2	2519.4	5028.4	5576.4	3743.7	1121.1	167.2	149.5	167.2	174.4	167.2	142.3	128.2
85°	709.3	871.9	1595.5	1509.9	510.7	226.6	205.7	241.0	262.5	269.7	255.4	220.1	198.5

Lichttechnischer Prüfbefund

Familie Silica® 21	Bestell-Nr.: 51MX24TCTAS EAN: 4058352801796	LP-Nummer 59276_139
-------------------------------------	--	--------------------------------------

Leuchtdichten in cd/m²

γ 65°
γ 70°
γ 75°
γ 80°
γ 85°

siteco

